

**LEGEND:**

- NEW BUILDING
- NEW BUILDING
- NEW BUILDING 2ND FLOOR and 3RD FLOOR
- BUILDING ACCESS
- BUILDING EXIT
- PROPERTY LINE
- LOT LINE
- FIRE ROUTE
- LINE OF CANOPY / ROOF ABOVE

See Document 98133185

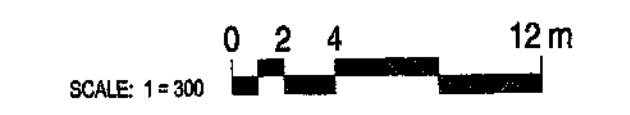
LUNenburg COUNTY LAND REGISTRATION OFFICE  
 I hereby certify that the information contained herein is a true and correct copy of the original as presented.  
**98133185 LRM RODD**  
 APR 13 2011 15:35

STELLAR INVESTMENT INC.

**"THE TOP" DEVELOPMENT**

MASONS BEACH ROAD  
 LUNenburg, NOVA SCOTIA

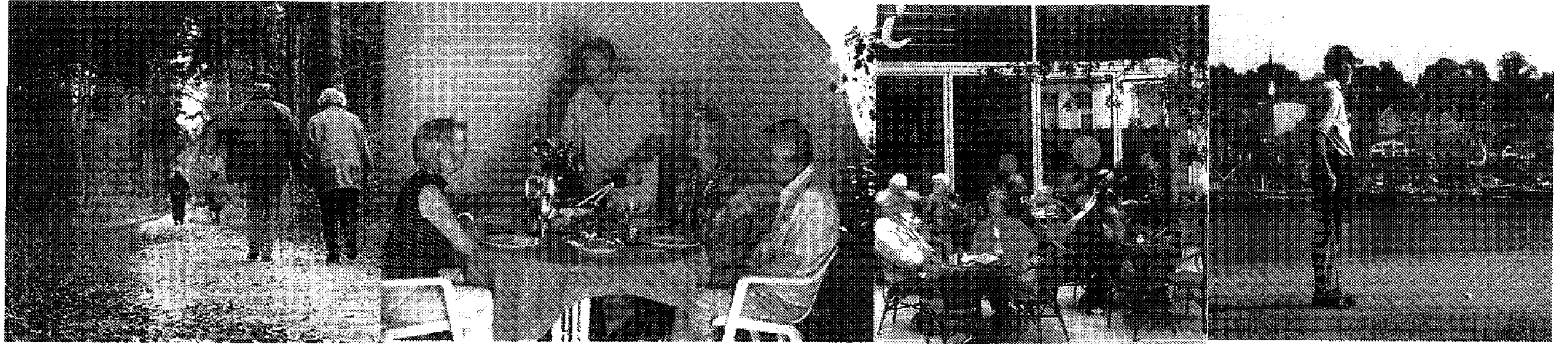
PROJECT NO. 08160  
 SITE PLAN - A-101  
 DATE: JUNE 01, 2010



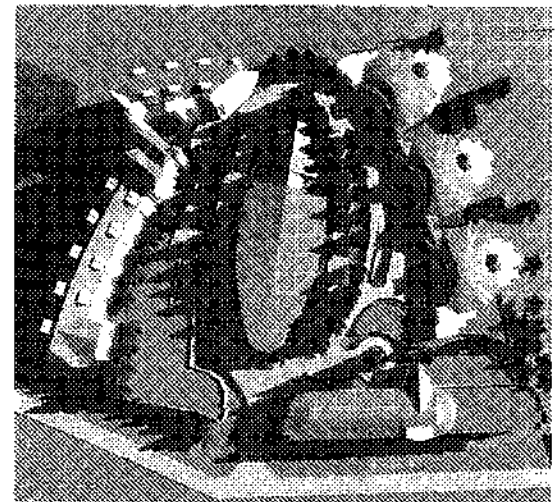
SCHEDULE B

RECEIVED JUL 21 2010

PETROFF PARTNERSHIP ARCHITECTS  
**PETROFF**



STELLAR INVESTMENT INC



PETROFF PARTNERSHIP ARCHITECTS

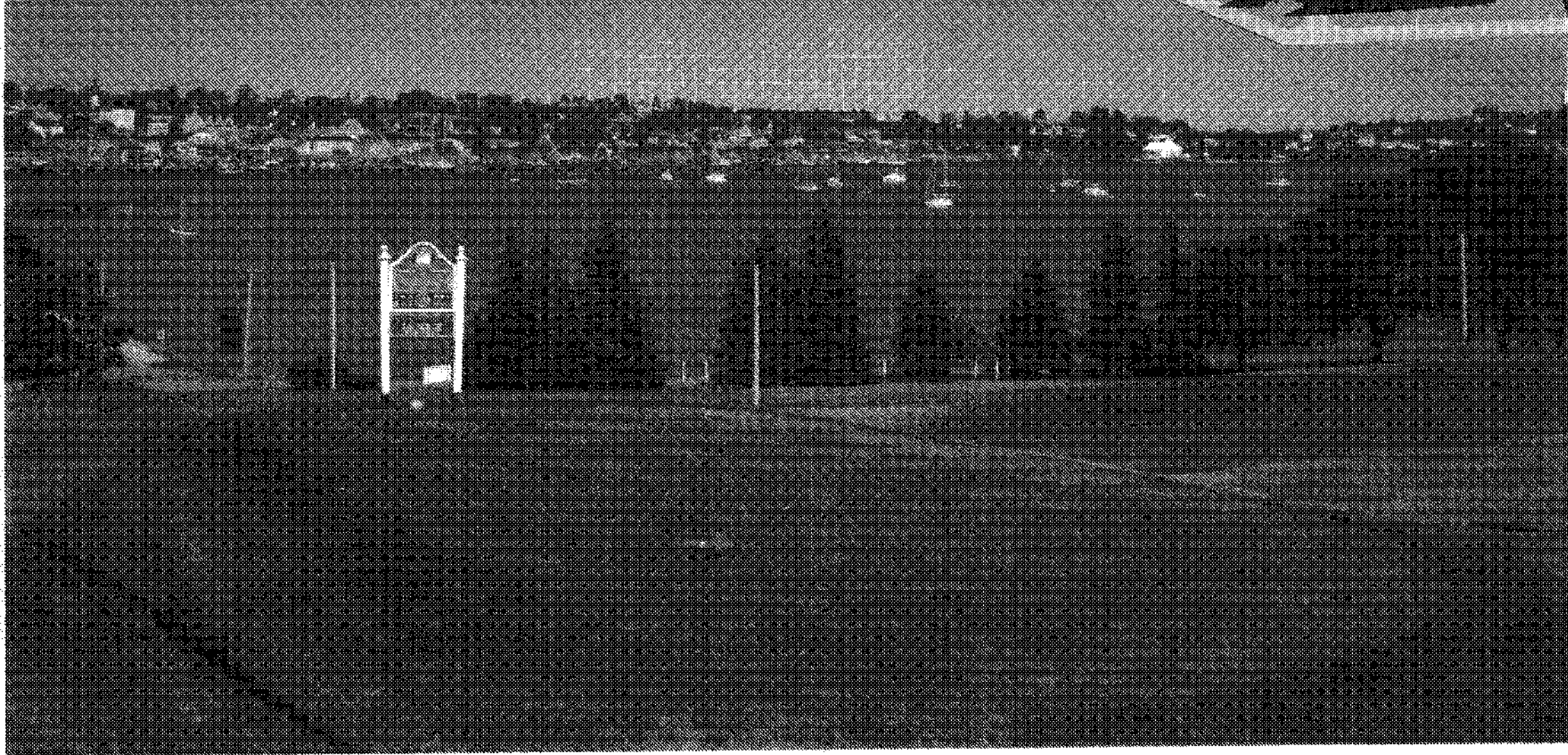
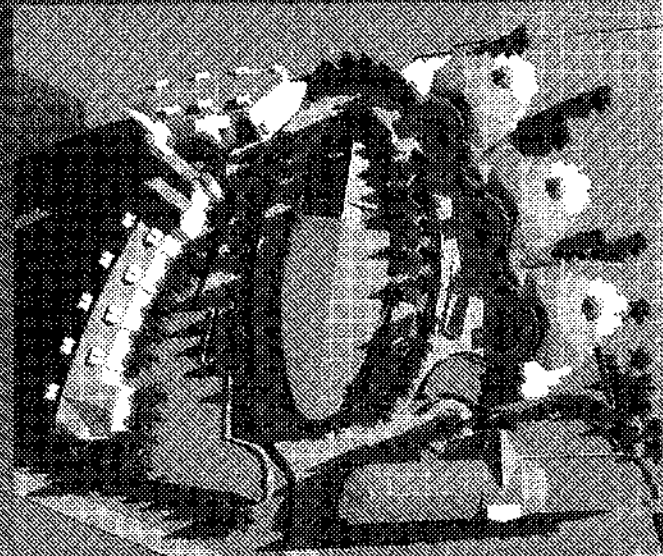
PETROFF

Planning Doc # 2010-34  
Planning Doc DA 2009-58

111E 101<sup>st</sup>

LUNENBURG NOVA SCOTIA

Schedule "C"



STELLAR INVESTMENT INC

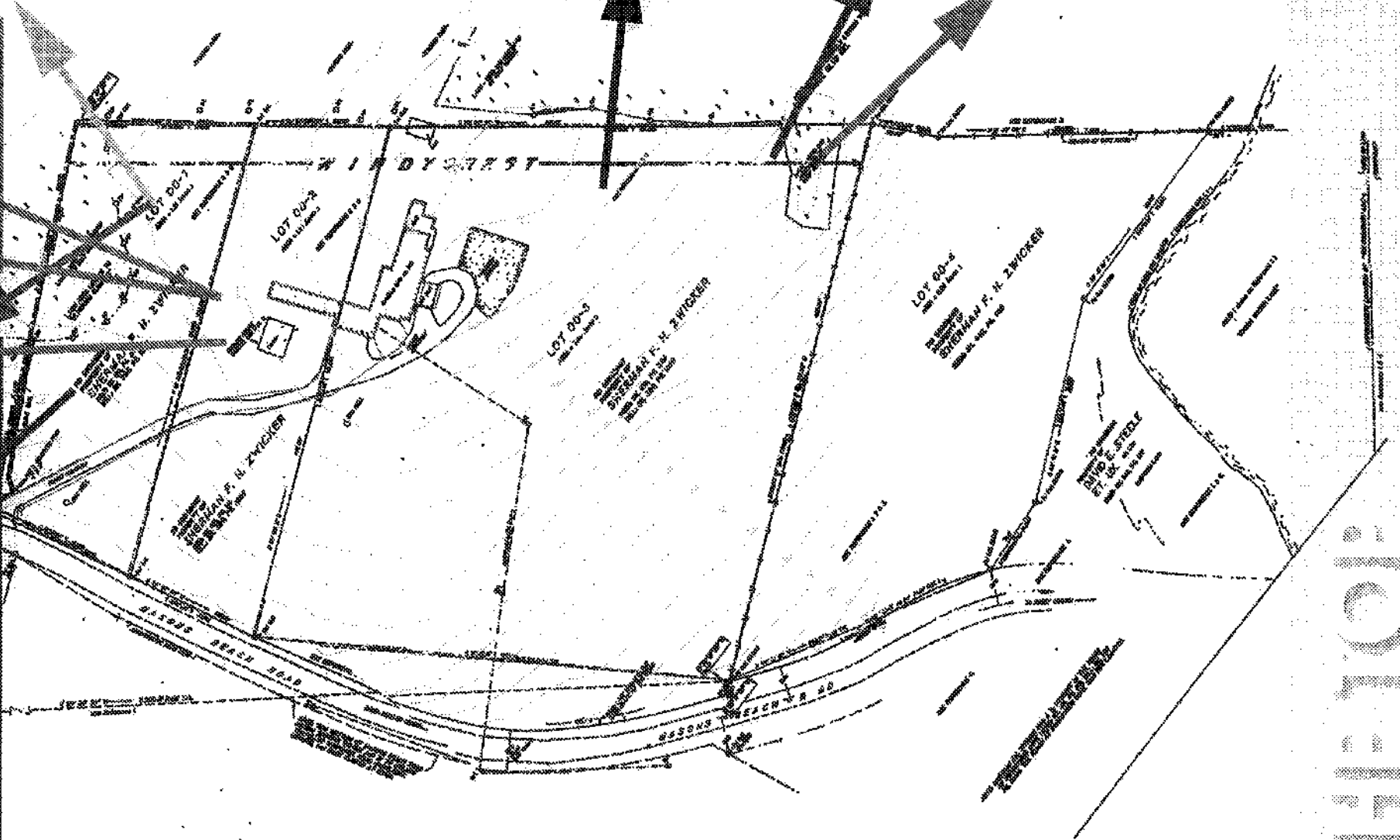
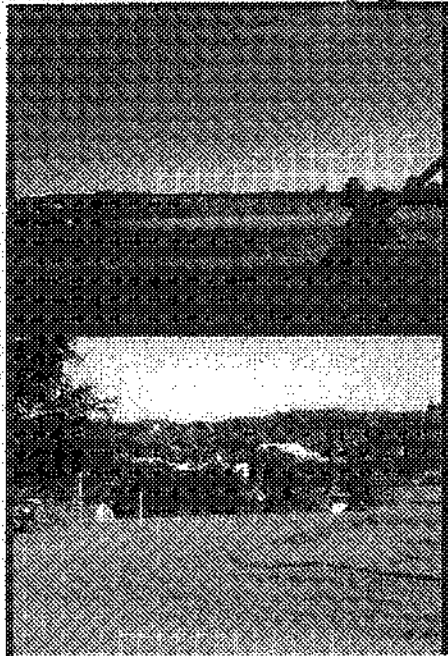
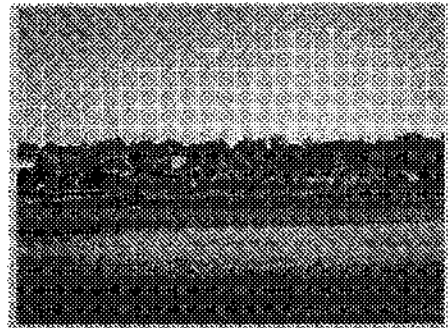
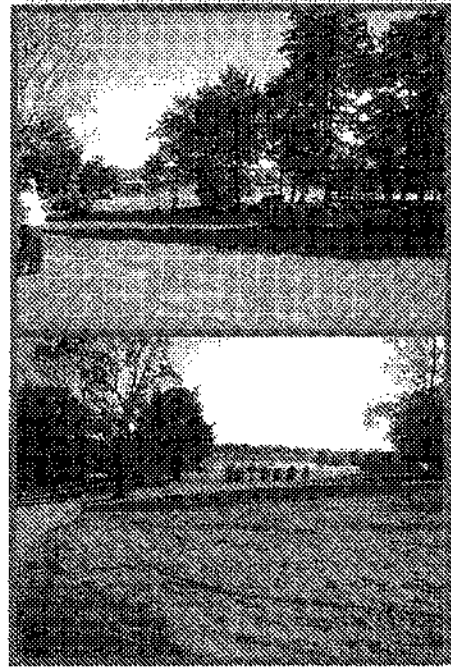
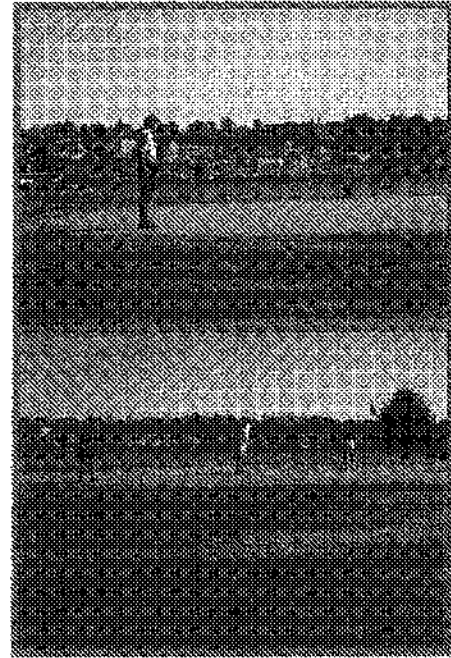
LUNenburg NOVA SCOTIA

# THE TOP

CONTEXT

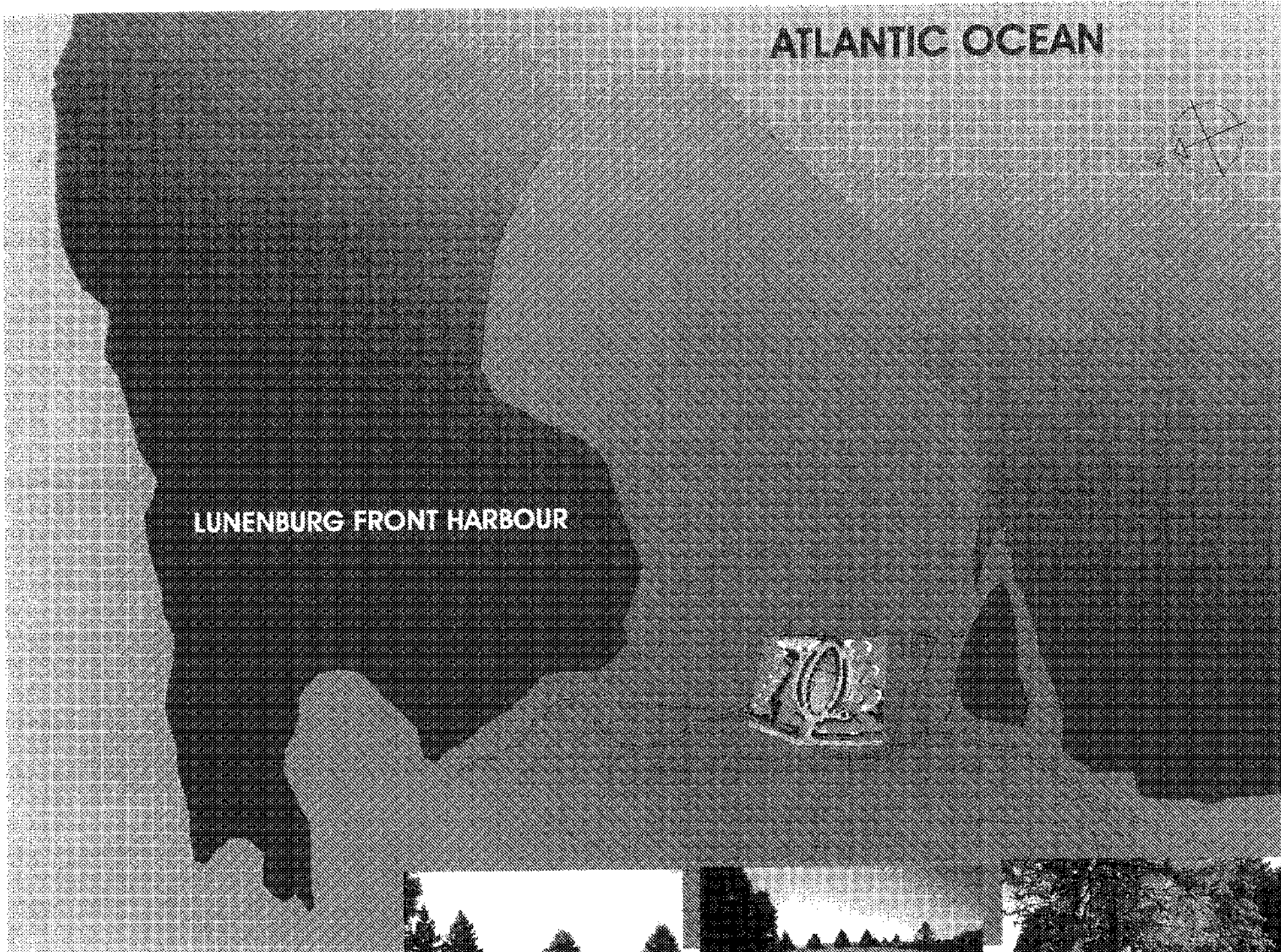
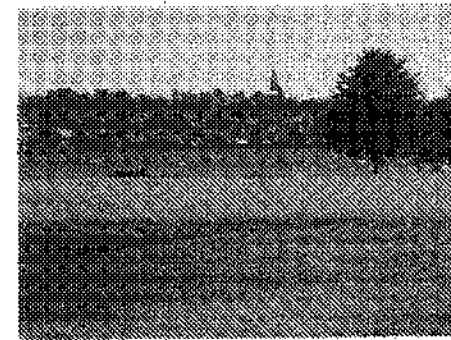
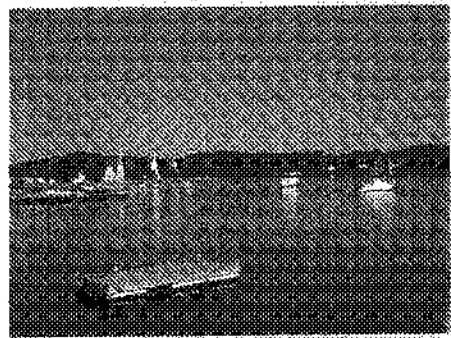
PETROFF PARTNERSHIP ARCHITECTS

PETROFF



VIEWS FROM SITE LOCATION

STELLAR INVESTMENT INC  
LUNENBURG NOVA SCOTIA  
THE 101:  
PETROFF PARTNERSHIP ARCHITECTS  
**PETROFF**



LOCATION

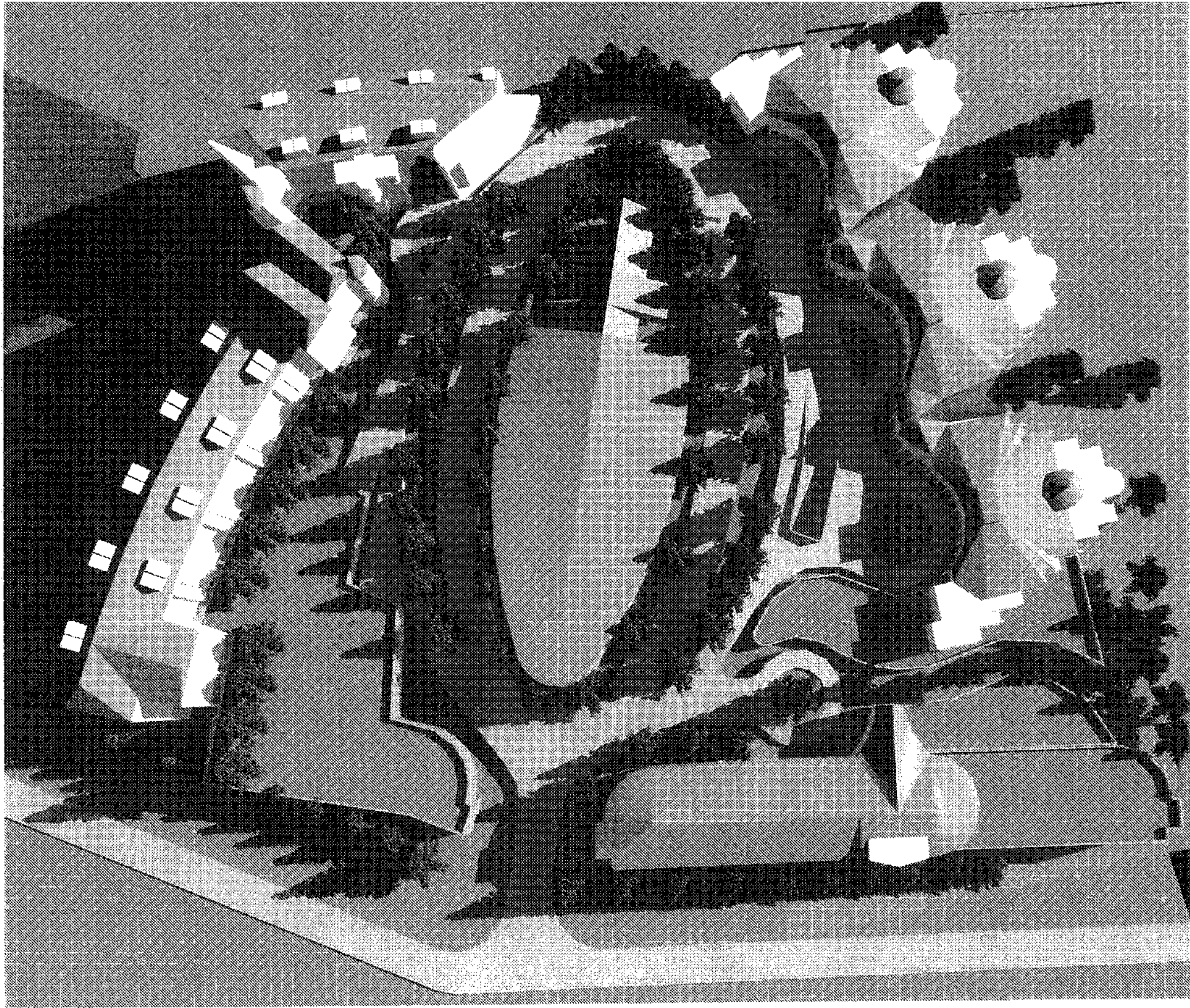
PETROFF PARTNERSHIP ARCHITECTS

PETROFF

THE 101

LUNENBURG NOVA SCOTIA

STELLAR INVESTMENT INC



TOP VIEW

KEYHOY PARTNERSHIP ARCHITECTS

**PETROFF**

**THE 101**

LUNenburg · NOVA SCOTIA

STELLAR INVESTMENT INC

**HOTEL COMPONENTS**

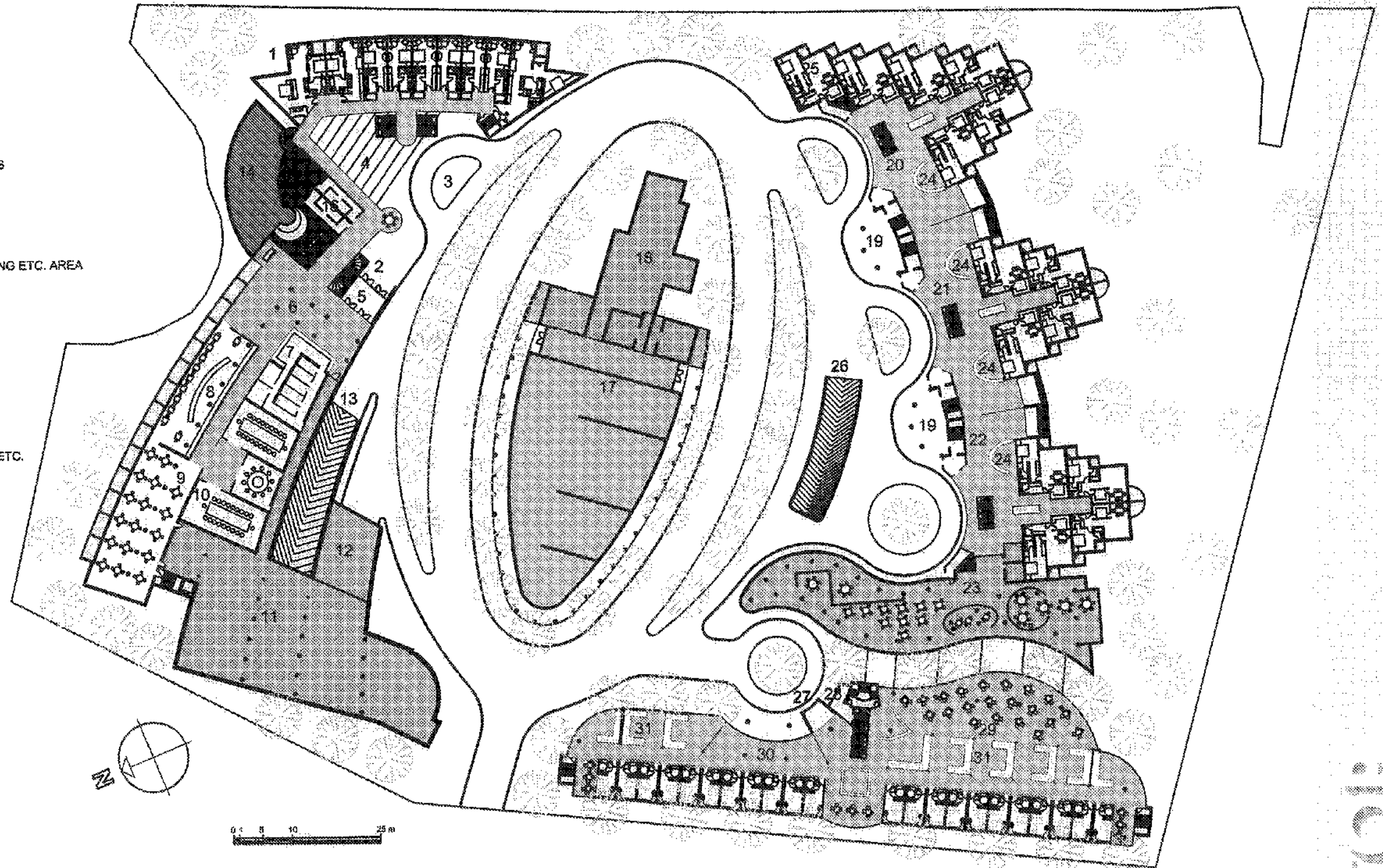
- 1 HOTEL PHASE 2
- 2 MAIN ENTRANCE
- 3 VEHICULAR ACCESS, DROP OFF-PICK UP
- 4 LANDSCAPED COURTYARD
- 5 VESTIBULE
- 6 MAIN LOBBY AND CIRCULATION AREA
- 7 FRONT DESK AND MANAGEMENT OFFICES
- 8 LOBBY BAR, LOUNGE AREA
- 9 RESTAURANT CAFE AREA
- 10 CONFERENCE MEETING ROOMS AREA
- 11 B.O.T.H. KITCHEN STAFF AREA
- 12 SHIPPING, RECEIVING GARBAGE HANDLING ETC. AREA
- 13 U.G. PARKING ACCESS-EGRESS RAMP
- 14 POOL
- 15 POOL DECK
- 16 CHANGING ROOMS

**COMMON FACILITIES, RESIDENCES AND LONG TERM CARE**

- 17 FITNESS, CARDIO MACHINES, EXERCISE ETC.
- 18 RESTAURANTS, SHOPS, ETC.
- 19 TERRACES
- 20 LOBBY OF PHASE 1
- 21 LOBBY OF PHASE 2
- 22 LOBBY OF PHASE 3
- 23 PARTIES, GAMES, CONTRACT BRIDGE, TV LOUNGES ETC.
- 24 CONCIERGE
- 25 CARETAKER'S FLAT
- 26 U.G. PARKING ACCESS-EGRESS RAMP
- 27 MAIN ENTRANCE
- 28 SERVICE ENTRANCE
- 29 DINING AND MAIN ACTIVITIES AREA
- 30 LOBBY AND VISITORS AREA
- 31 SPECIFIC ACTIVITIES AREA

**UNITS ON GROUND LEVEL**

HOTEL UNITS	9
RETIREMENT APARTMENTS	14
LONG TERM CARE UNIT	22



**GROUND FLOOR LEVEL**

PETROFF PARTNERSHIP ARCHITECTS

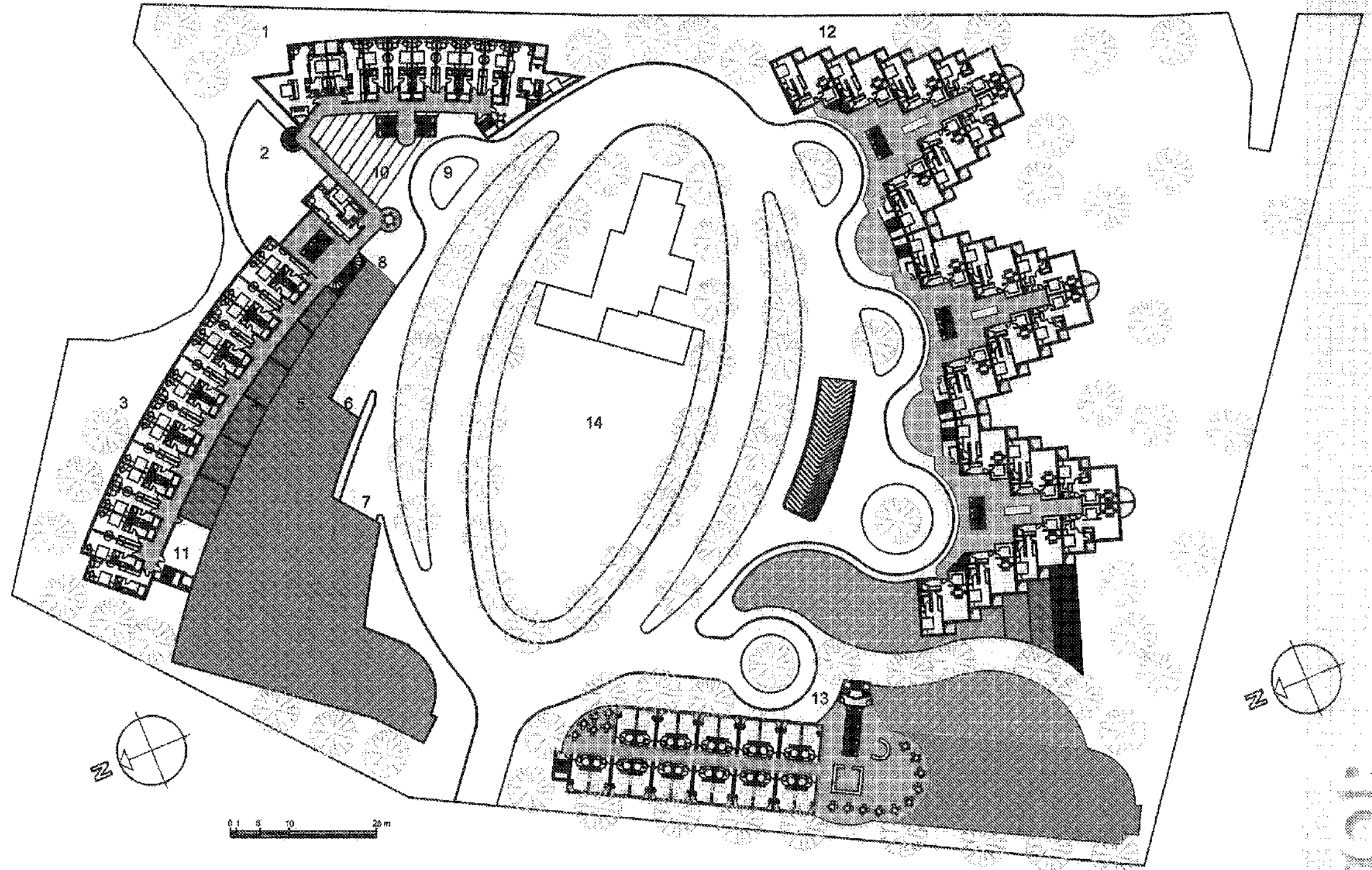
**PETROFF**

HOTEL: SINGLE ROOMS FLOOR,  
SUITES AT SPECIFIC LOCATIONS

- 1 HOTEL PHASE 2
- 2 POOL AREA
- 3 HOTEL PHASE I
- 4 SKYLIGHTS
- 5 LANDSCAPED ROOF TERRACE
- 6 UG. PARKING ACCESS, EGRESS
- 7 RECEIVING
- 8 MAIN ENTRANCE
- 9 VEHICULAR ACCESS, DROP OFF-PICK UP
- 10 LANDSCAPED COURT YARD AREA
- 11 SERVICE CORE, MAIDS ROOM-STORAGE
- 12 RESIDENTIAL, 3 CLUSTERS-3 PHASES
- 13 LONG TERM CARE
- 14 ROOF OF COMMON FACILITIES

UNITS ON 2nd LEVEL

HOTEL UNITS	26
RETIREMENT APARTMENTS	20
LONG TERM CARE UNIT	22



2ND FLOOR LEVEL

PETROFF PARTNERSHIP ARCHITECTS

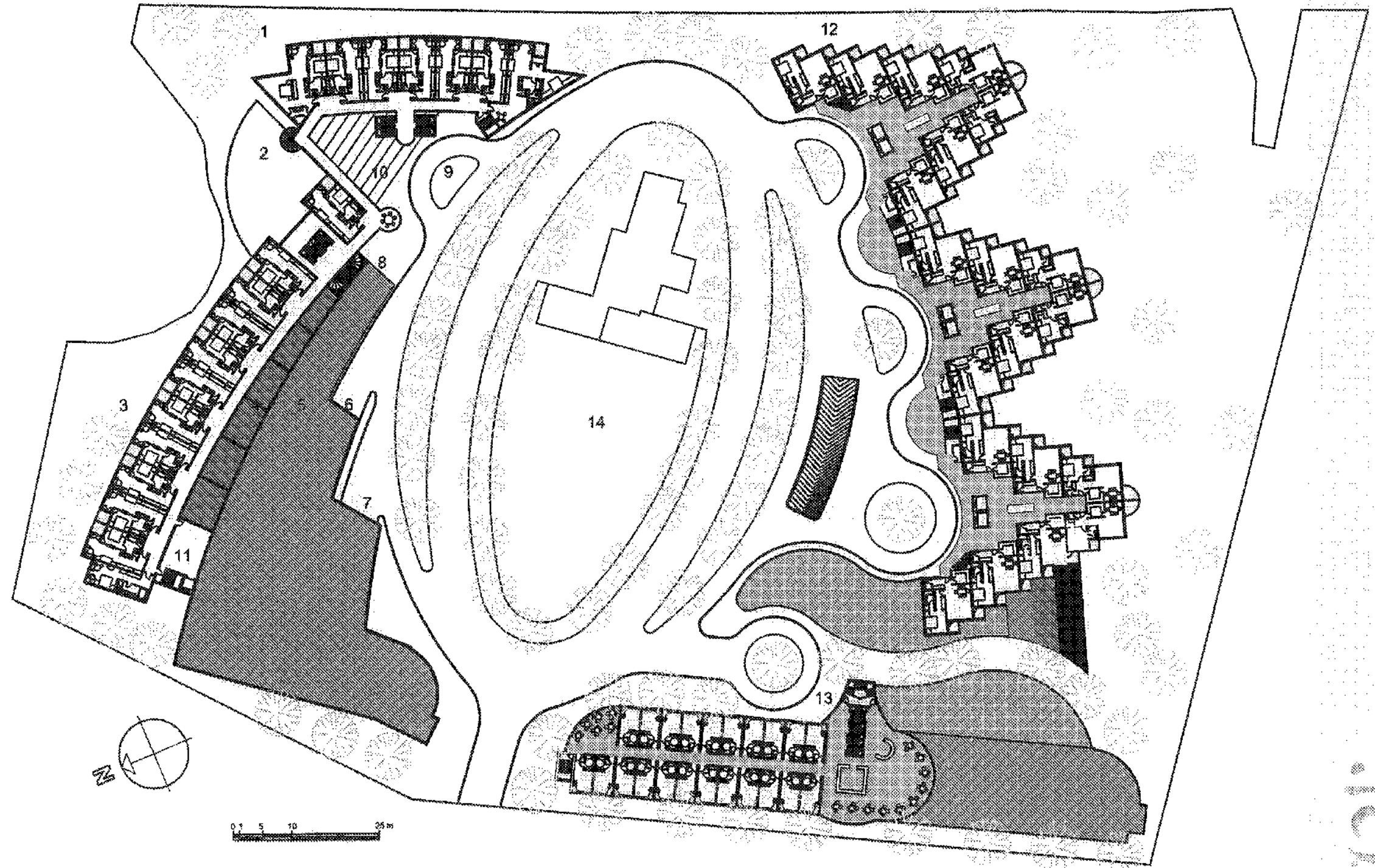
PETROFF

HOTEL: SINGLE ROOMS FLOOR,  
SUITES AT SPECIFIC LOCATIONS

- 1 HOTEL PHASE 2
- 2 POOL AREA
- 3 HOTEL PHASE 1
- 4 SKYLIGHTS
- 5 LANDSCAPED ROOF TERRACE
- 6 UG. PARKING ACCESS, EGRESS
- 7 RECEIVING
- 8 MAIN ENTRANCE
- 9 VEHICULAR ACCESS, DROP OFF-PICK UP
- 10 LANDSCAPED COURT YARD AREA
- 11 SERVICE CORE, MAIDS ROOM-STORAGE
- 12 RESIDENTIAL, 3 CLUSTERS-3 PHASES
- 13 LONG TERM CARE
- 14 ROOF OF COMMON FACILITIES

UNITS ON 3rd LEVEL

HOTEL UNITS	19
RETIREMENT APARTMENTS	20
LONG TERM CARE UNIT	22



3RD FLOOR LEVEL

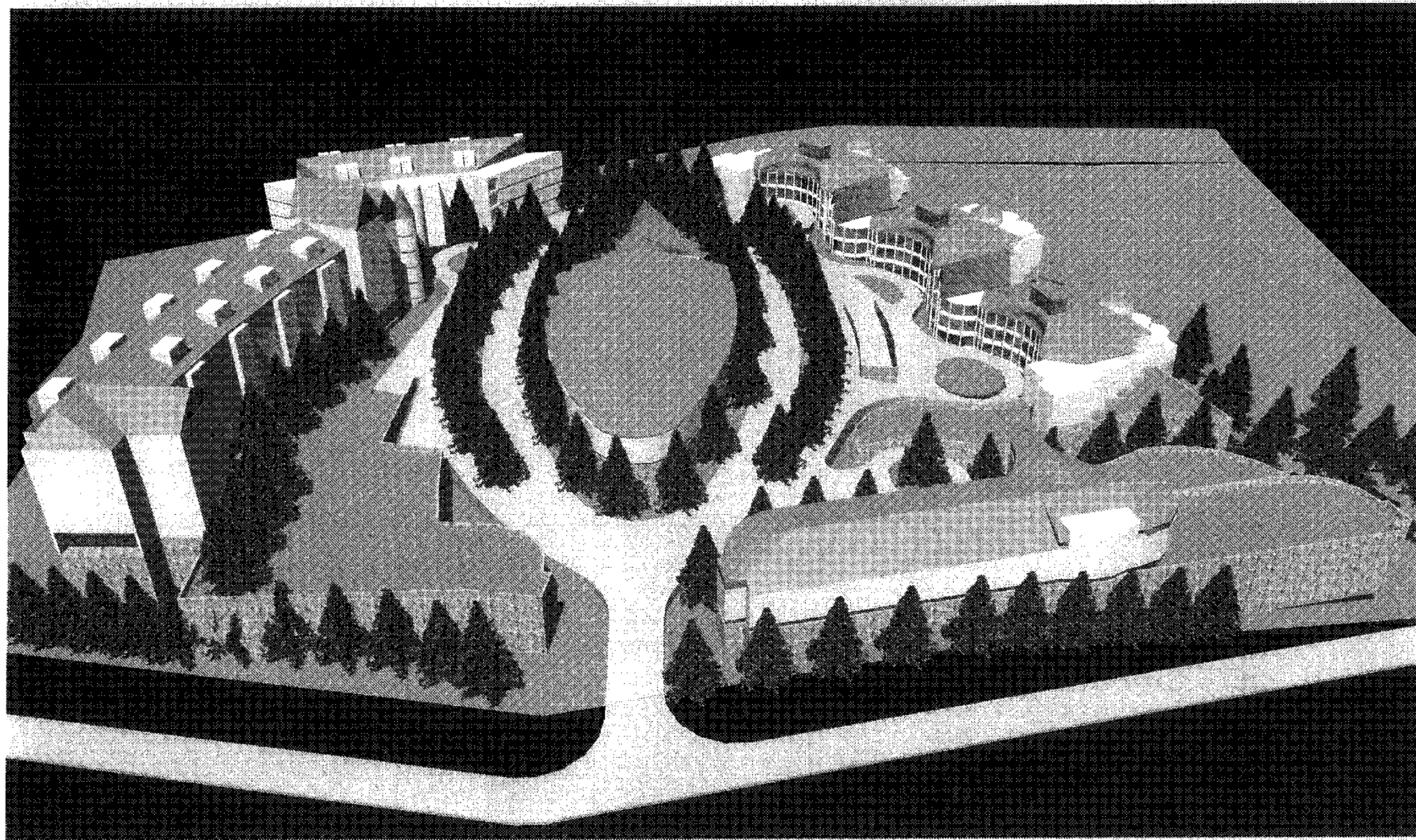
PETROFF PARTNERSHIP ARCHITECTS

**PETROFF**

THE TOP

LUNenburg NOVA SCOTIA

STELLAR INVESTMENT INC



AERIAL PERSPECTIVE

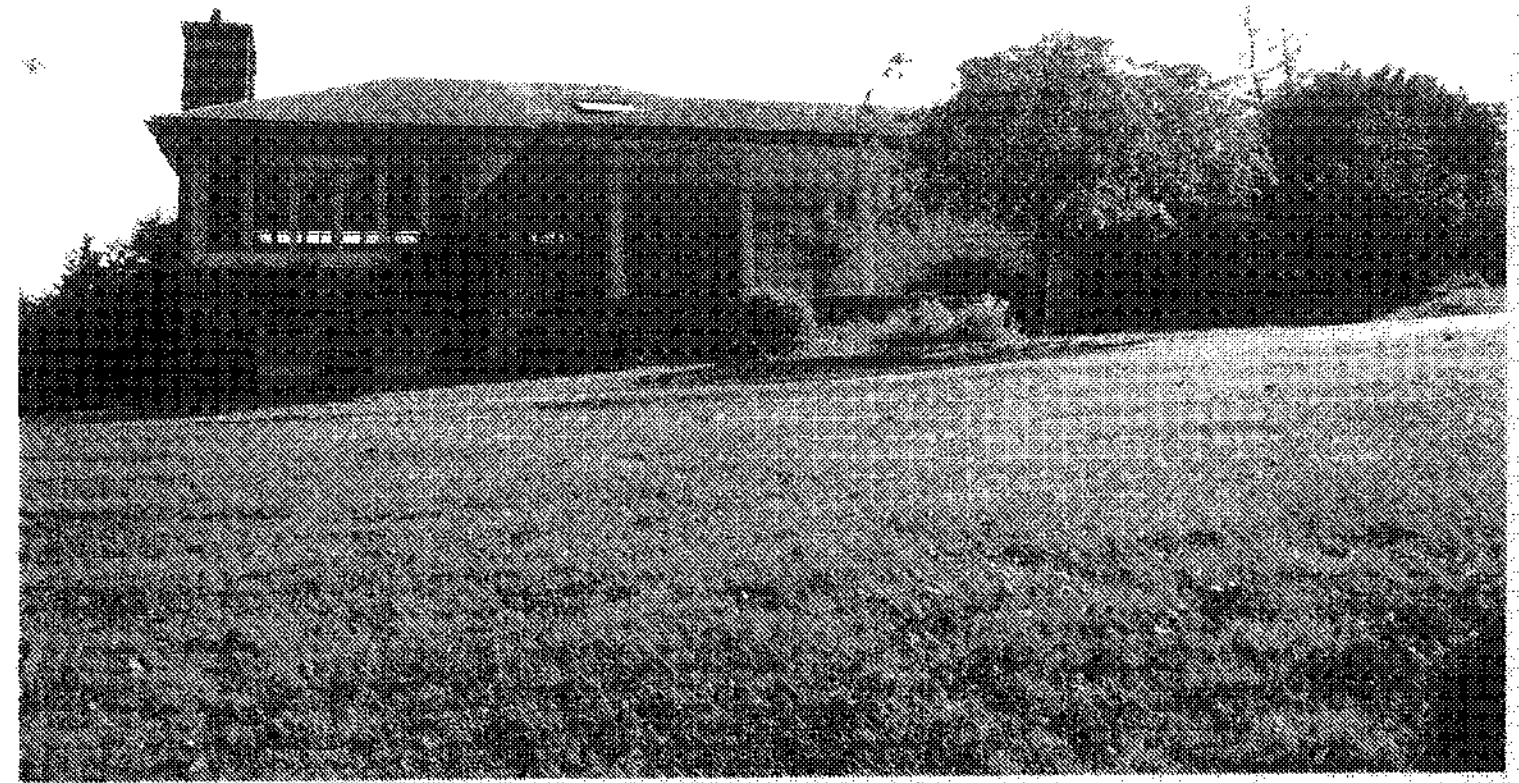
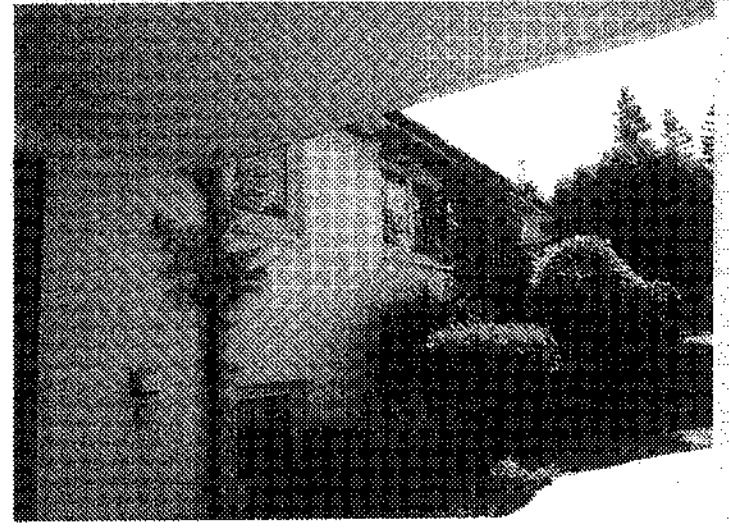
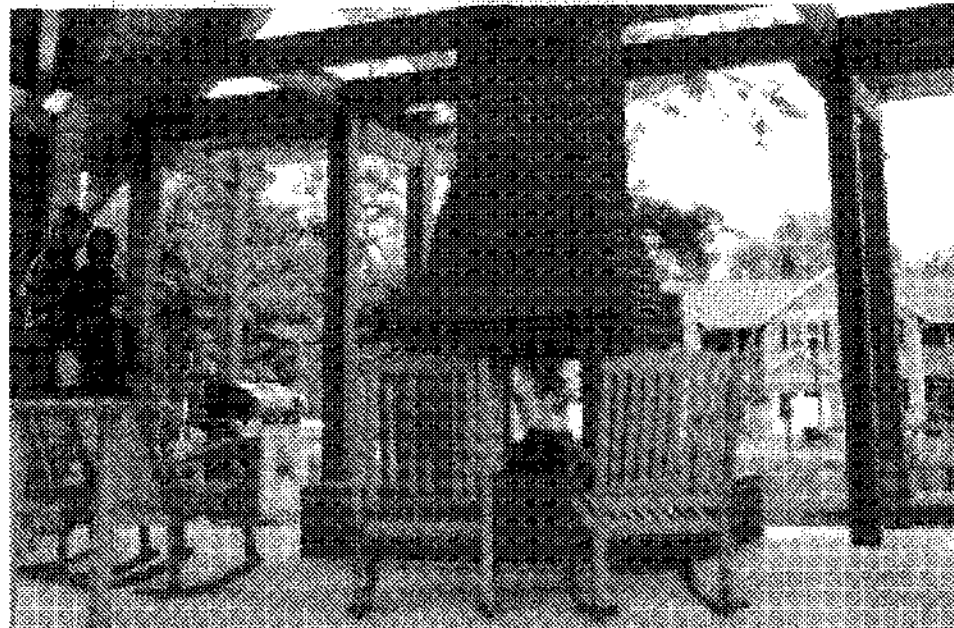
PETROFF PARTNERSHIP ARCHITECTS

**PETROFF**

**THE TOP**

LUNenburg · NOVA SCOTIA

STELLAR INVESTMENT INC



STELLAR INVESTMENT INC

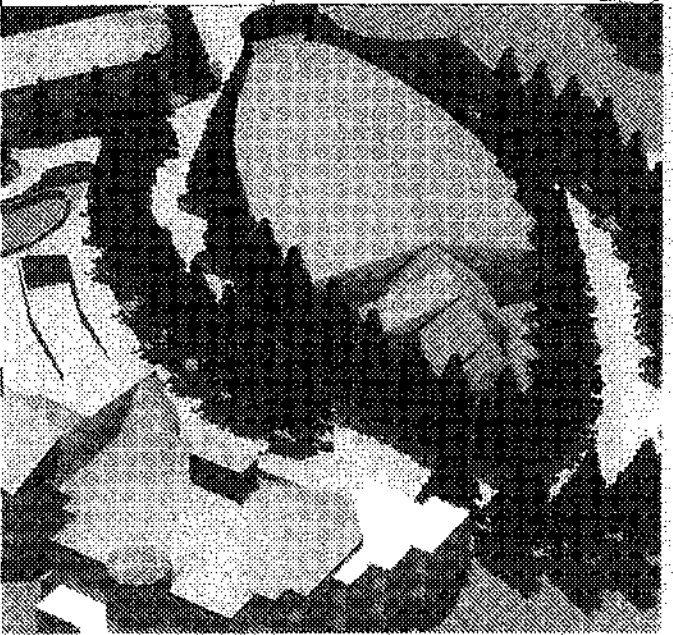
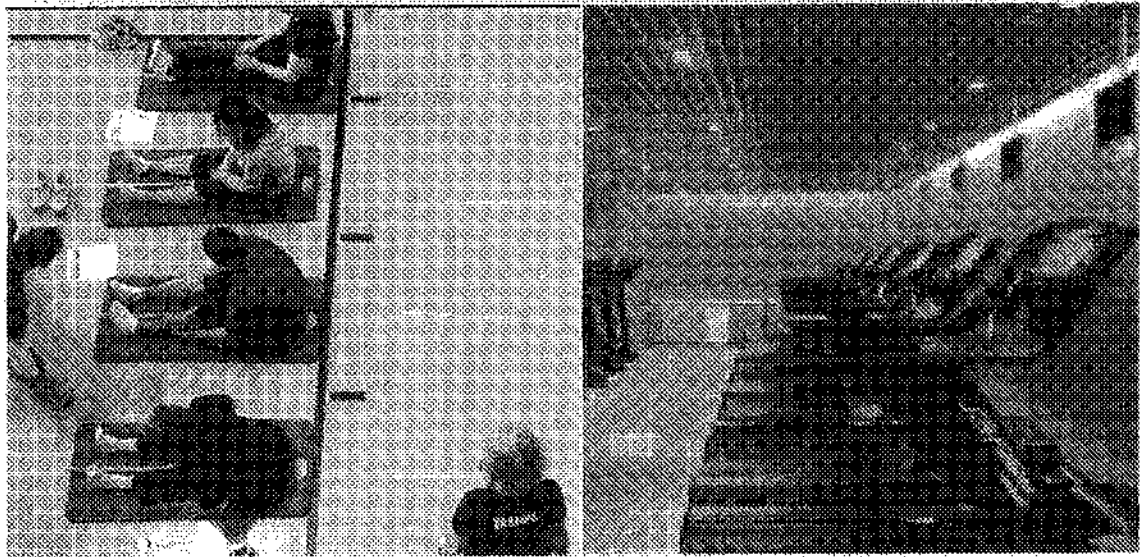
LUNenburg NOVA SCOTIA

THE TOP

TOWN CENTRE

PETROFF SKYRISHIP ARCHITECTS

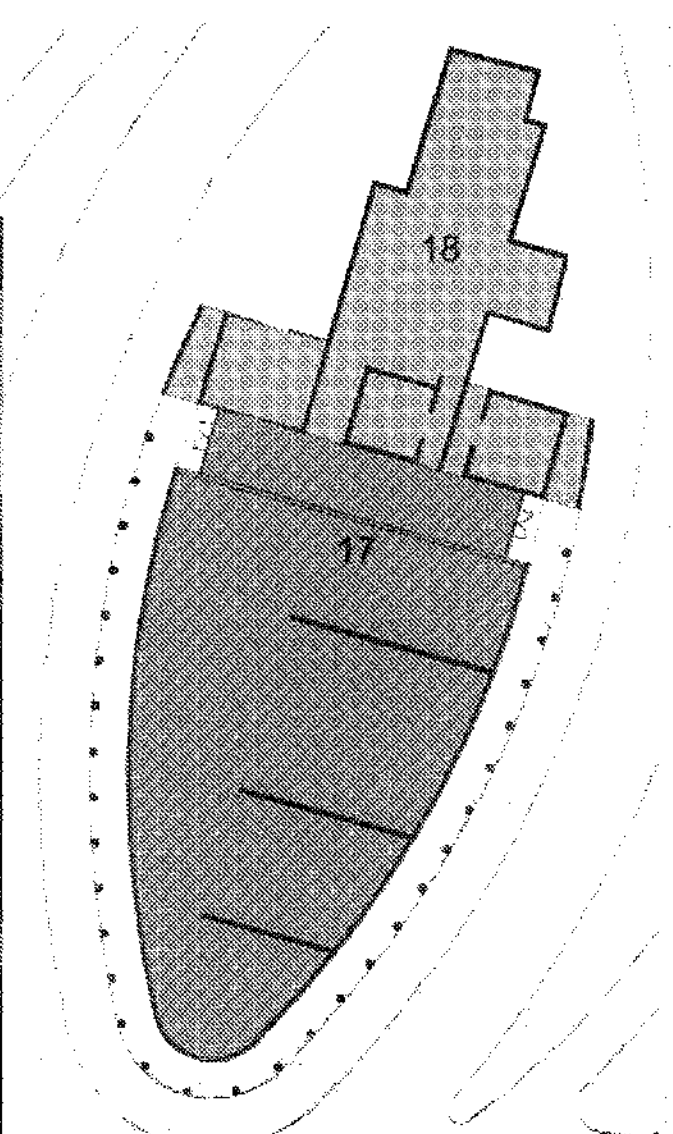
PETROFF



TOWN CENTRE

PETROFF PARTNERSHIP ARCHITECTS

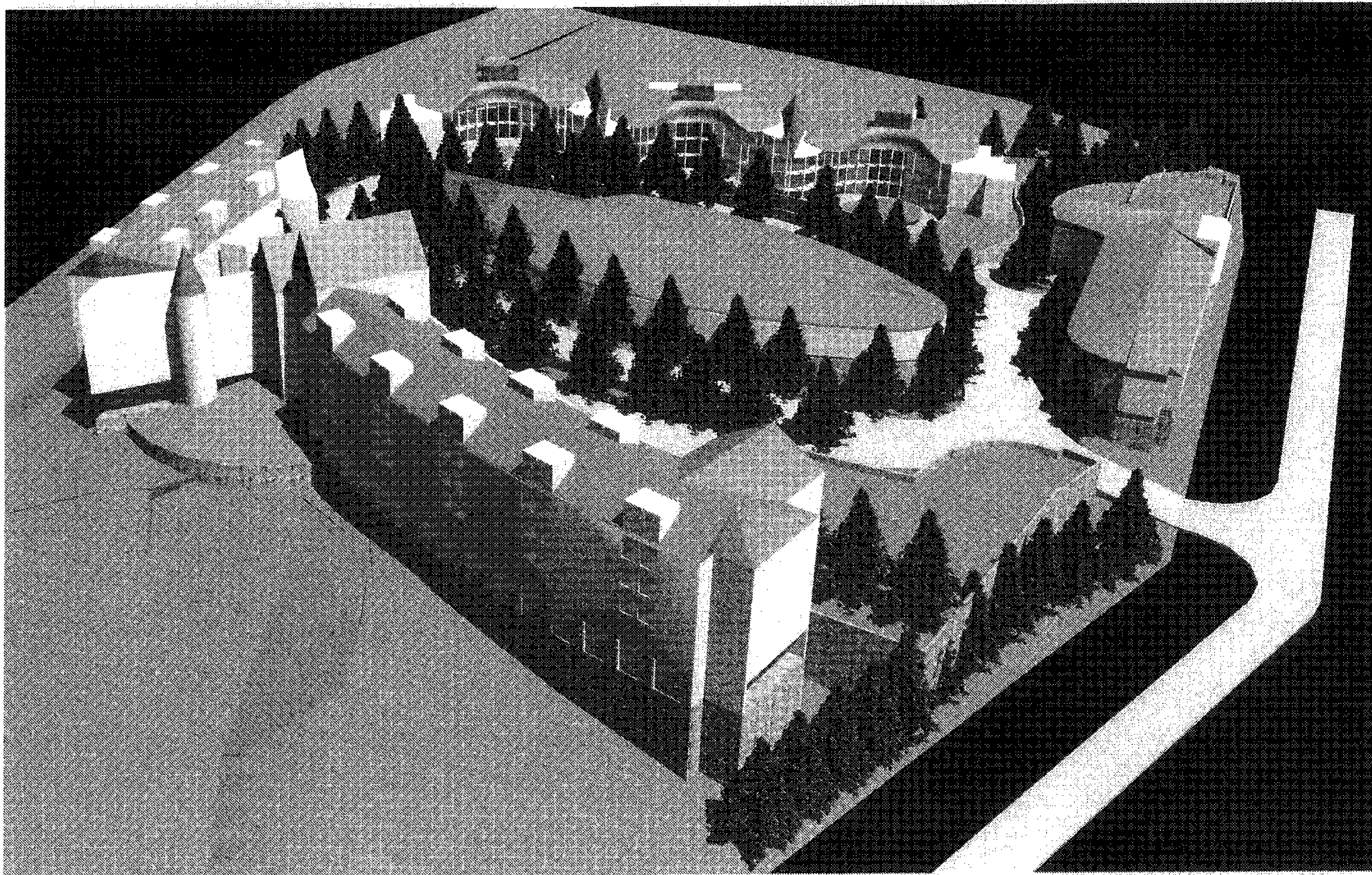
PETROFF



THE 101

LUNenburg · NOVA SCOTIA

STELLAR INVESTMENT INC



AERIAL PERSPECTIVE

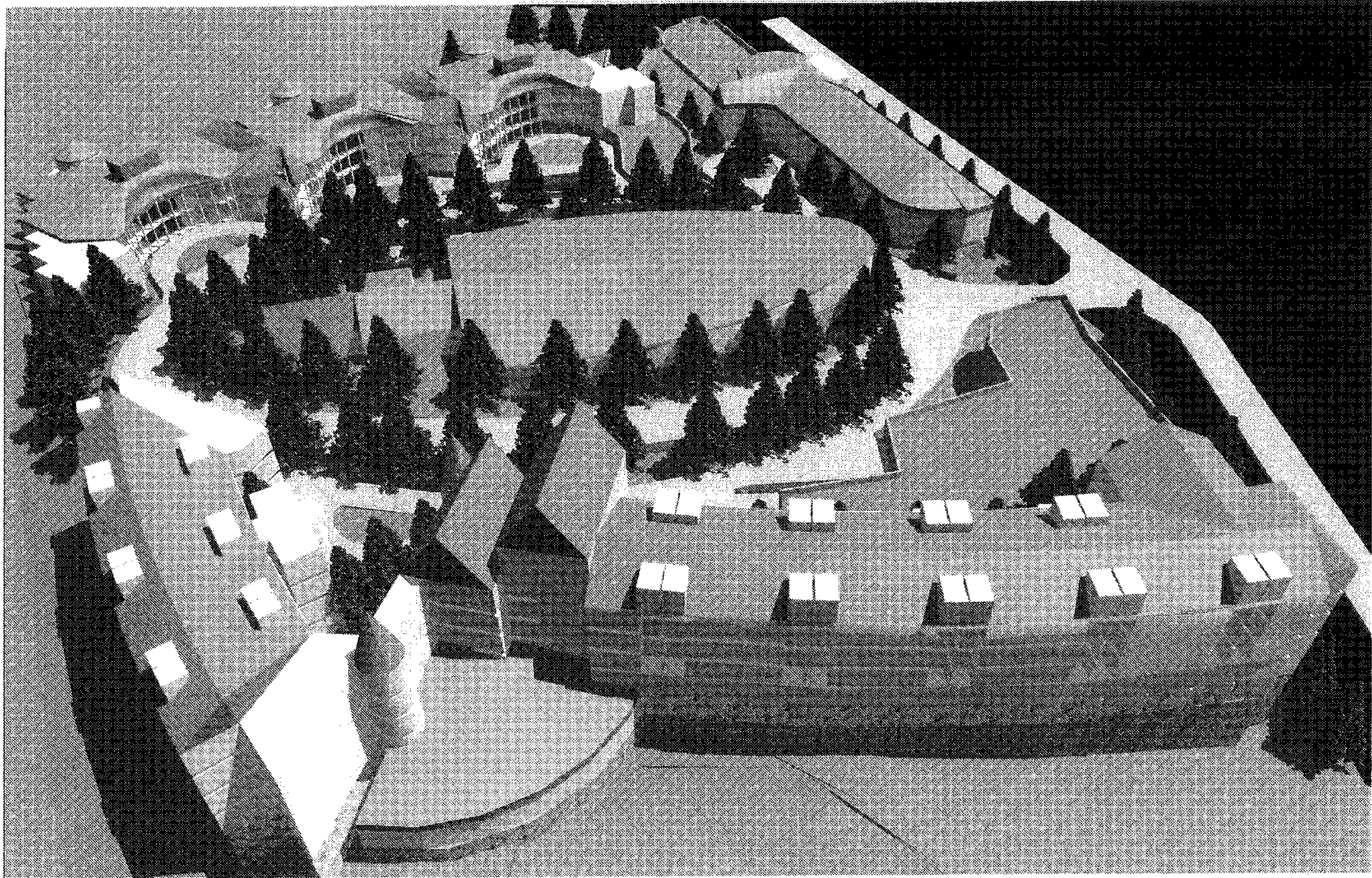
PETROFF PARTNERSHIP ARCHITECTS

PETROFF

THE 101

LUNenburg NOVA SCOTIA

STELLAR INVESTMENT INC



AERIAL PERSPECTIVE

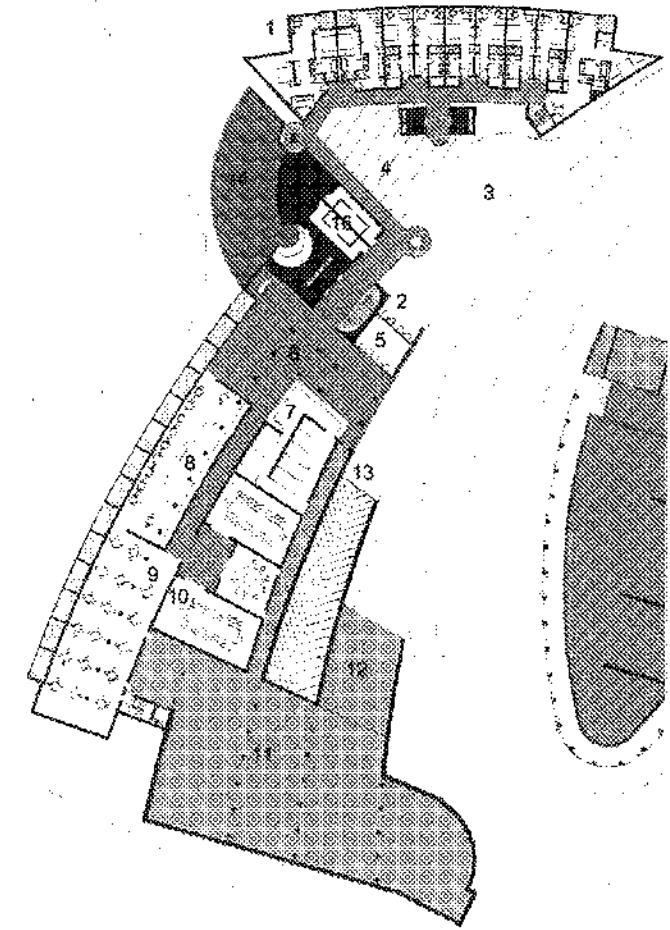
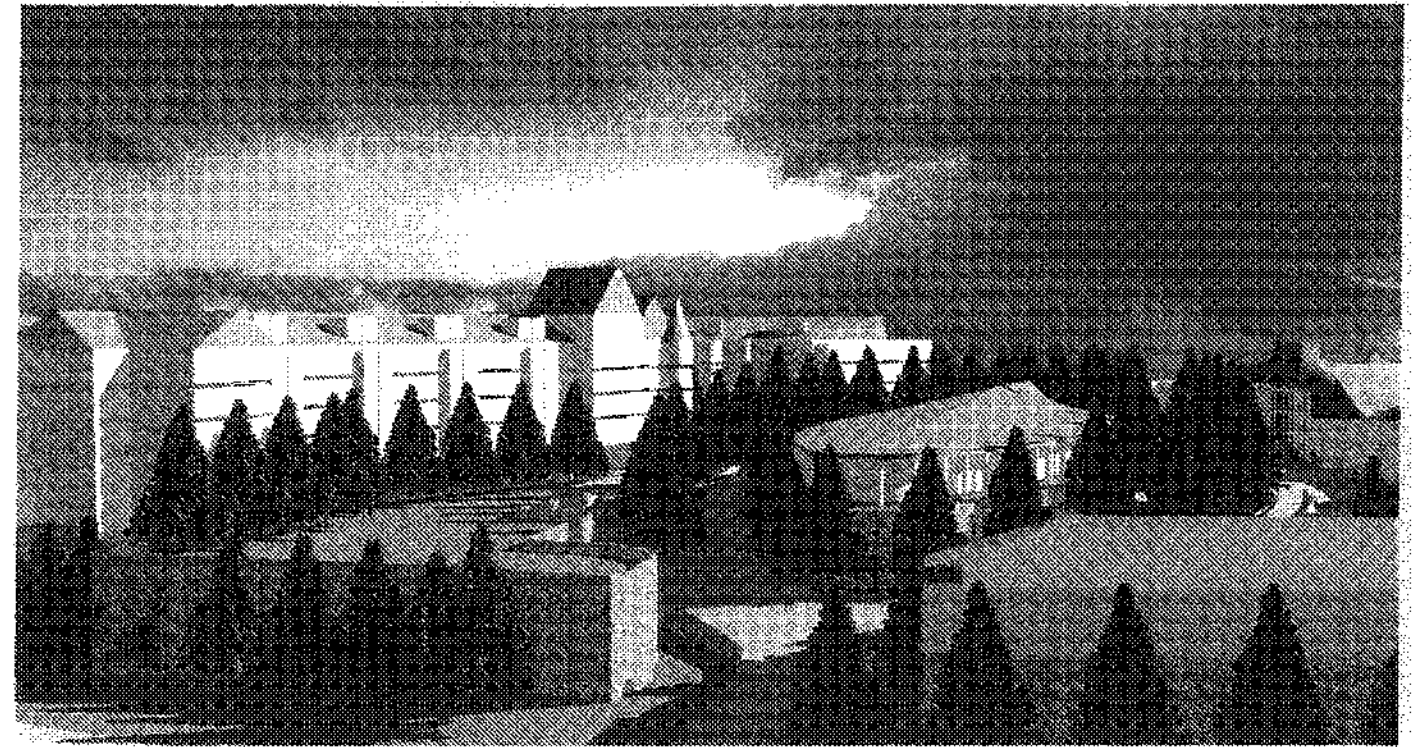
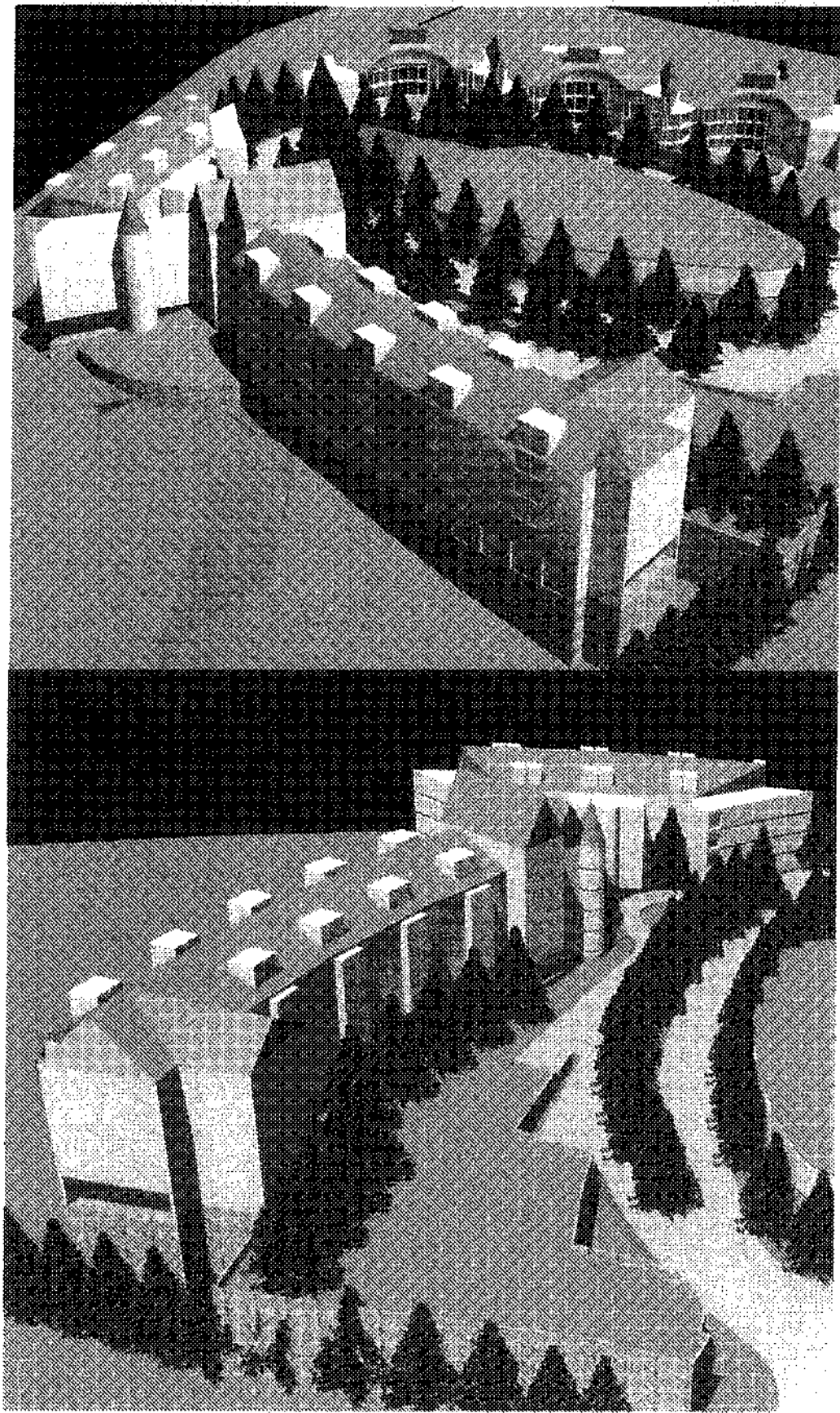
PETROFF PARTNERSHIP ARCHITECTS

**PETROFF**

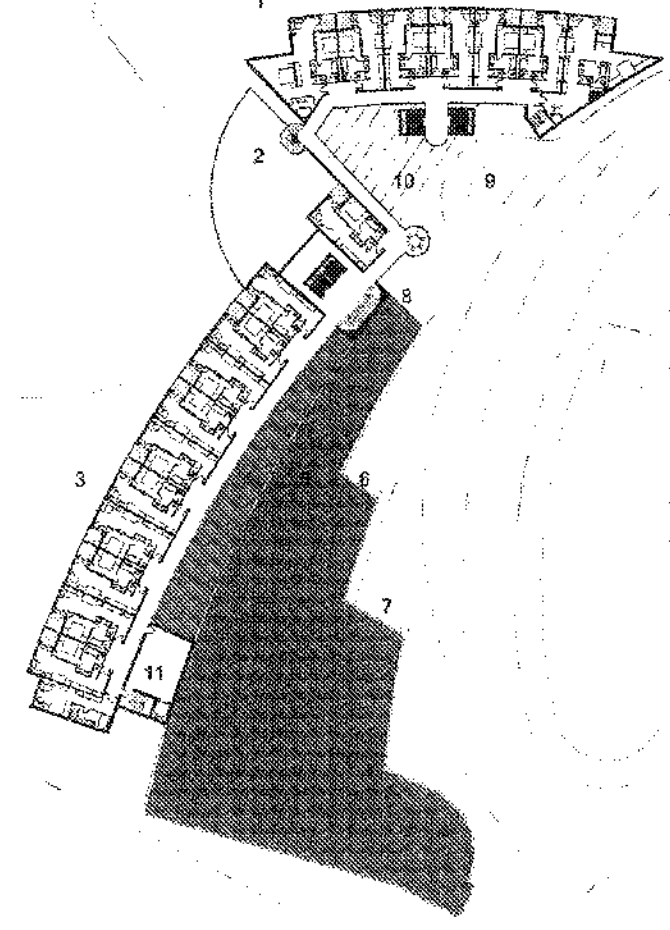
**THE 101**

LUNenburg · NOVA SCOTIA

STELLAR INVESTMENT INC



LOWER LEVEL



UPPER LEVELS

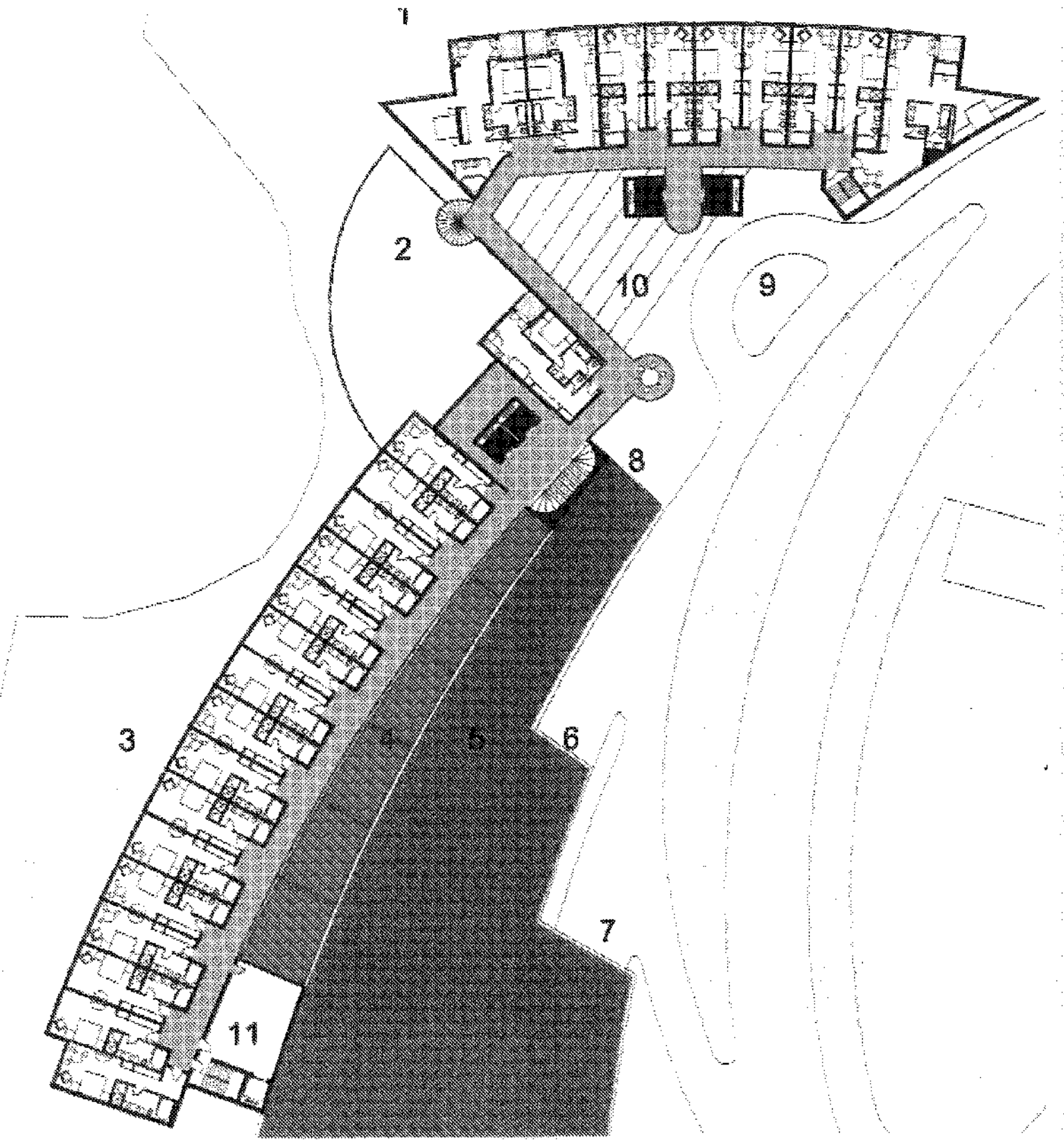
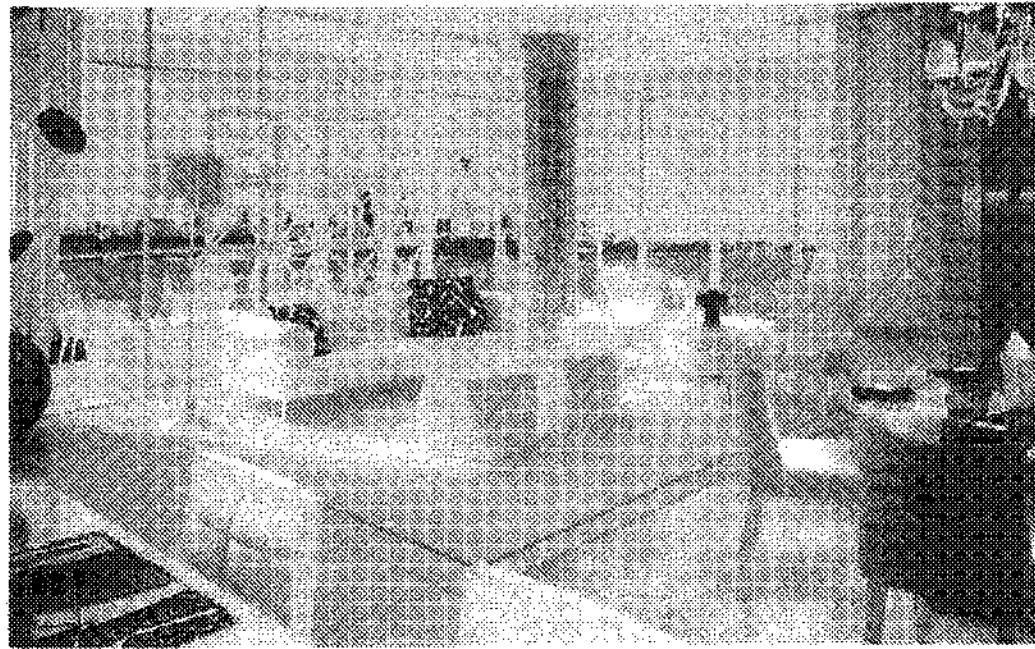
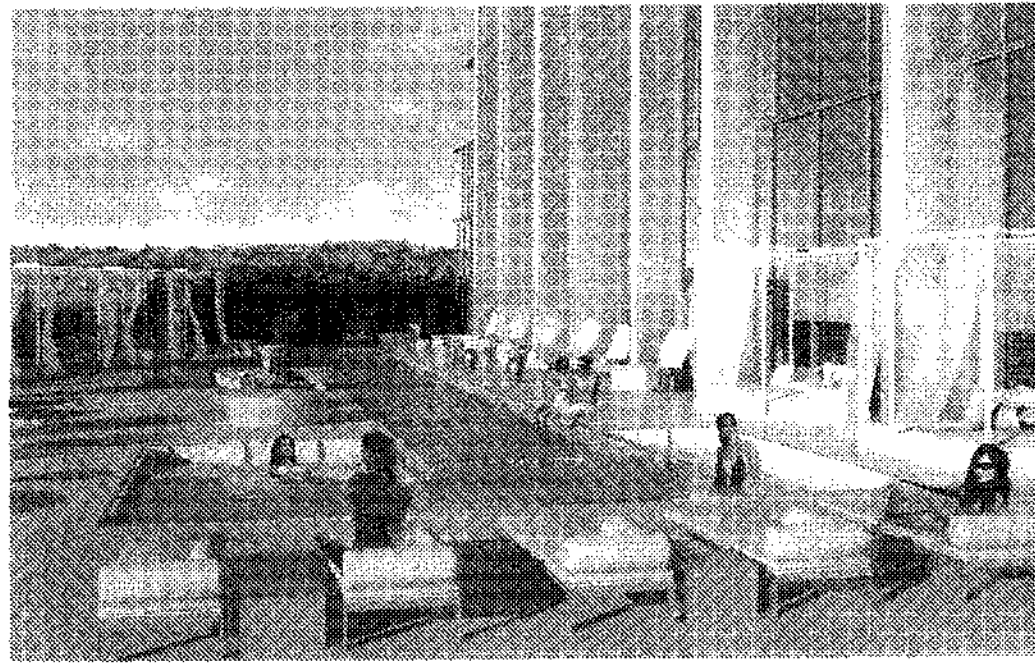
HOTEL

PETROFF PARTNERSHIP ARCHITECTS

**PETROFF**

STELLAR INVESTMENT INC

**THE HOTEL**  
LUNenburg NOVA SCOTIA



HOTEL

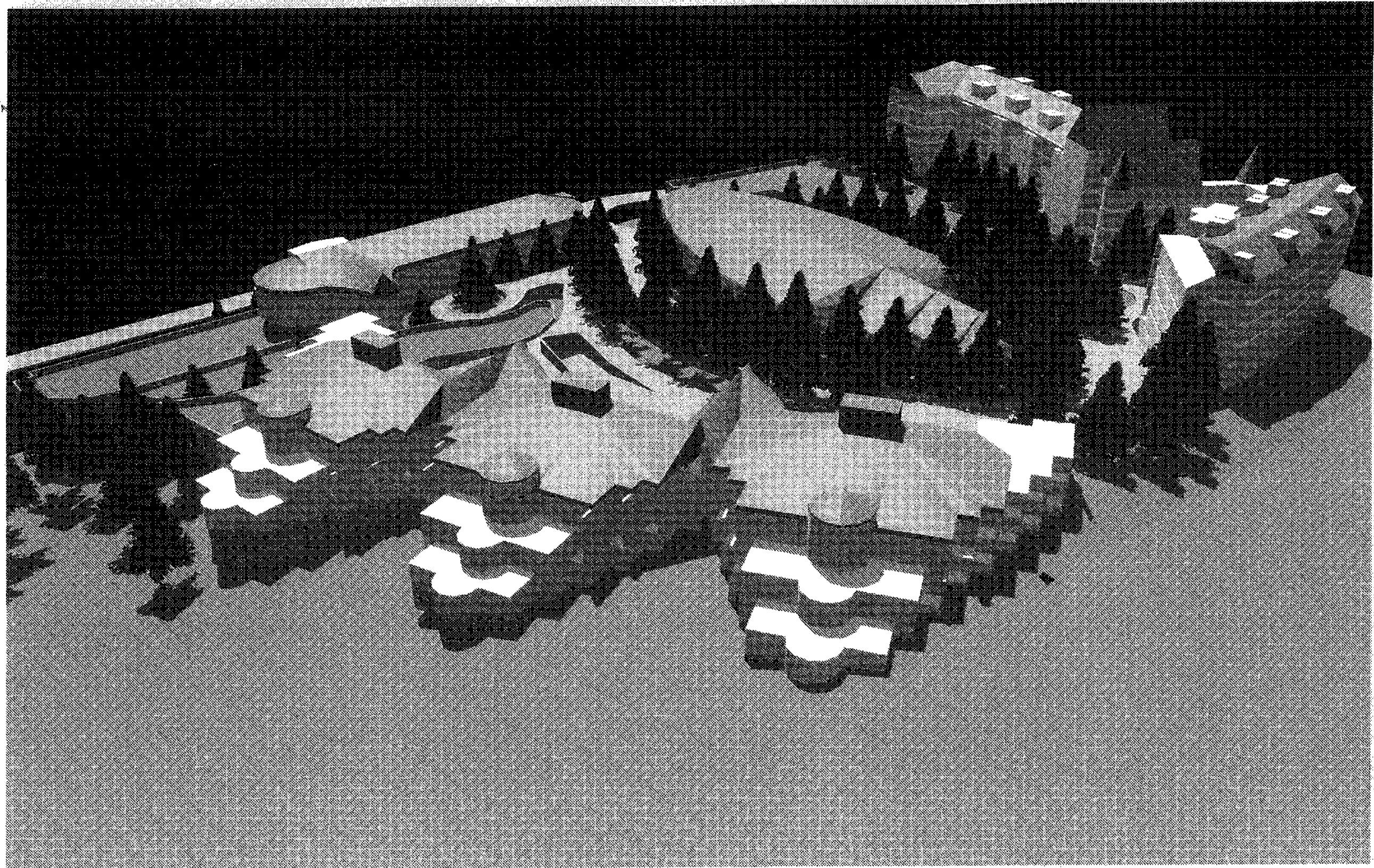
PETROFF PARTNERSHIP ARCHITECTS

PETROFF

THE ICE

LUNenburg NOVA SCOTIA

STELLAR INVESTMENT INC



AERIAL PERSPECTIVE

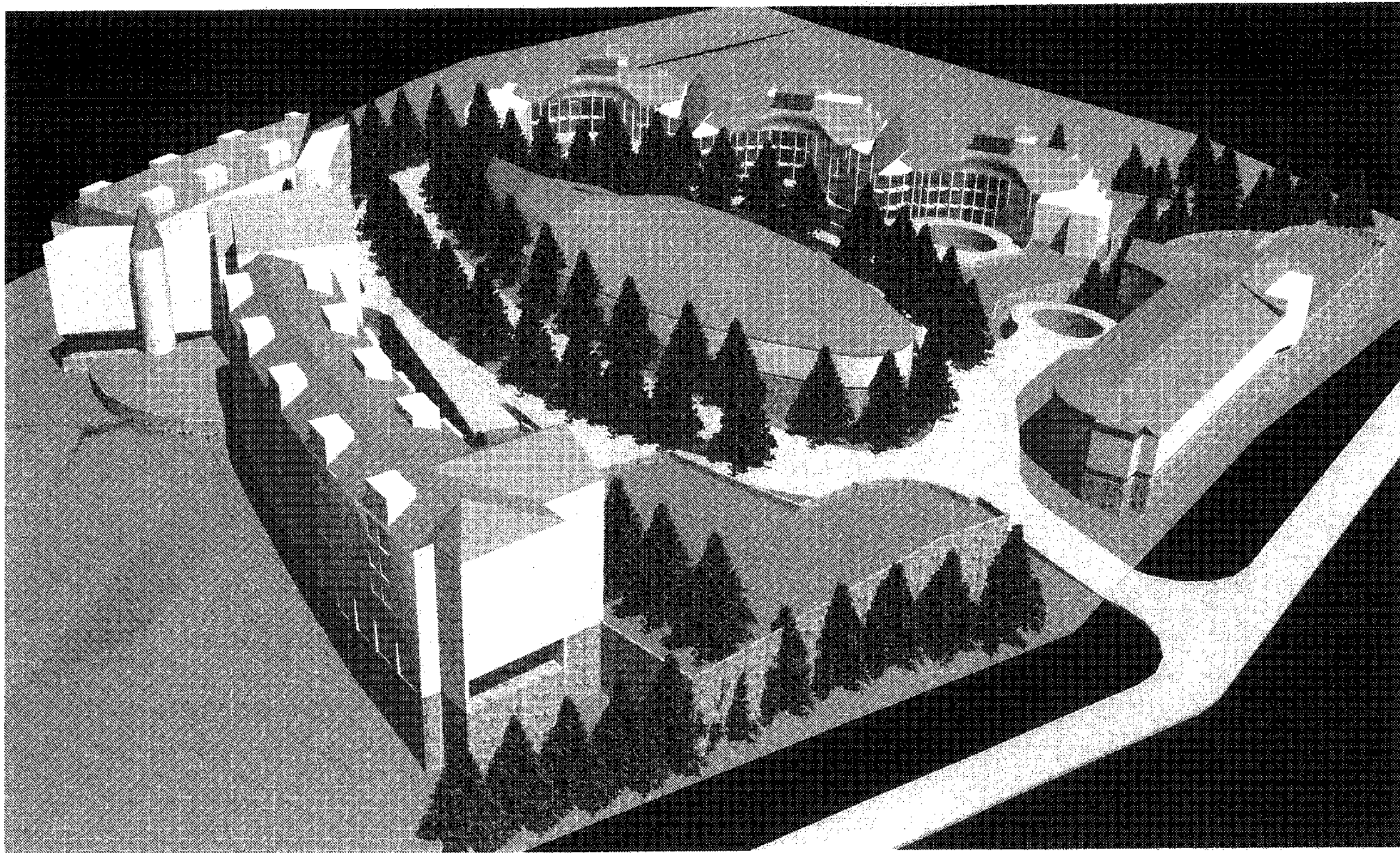
PETROFF PARTNERSHIP ARCHITECTS

PETROFF

THE 101

LUNenburg NOVA SCOTIA

STELLAR INVESTMENT INC



AERIAL PERSPECTIVE

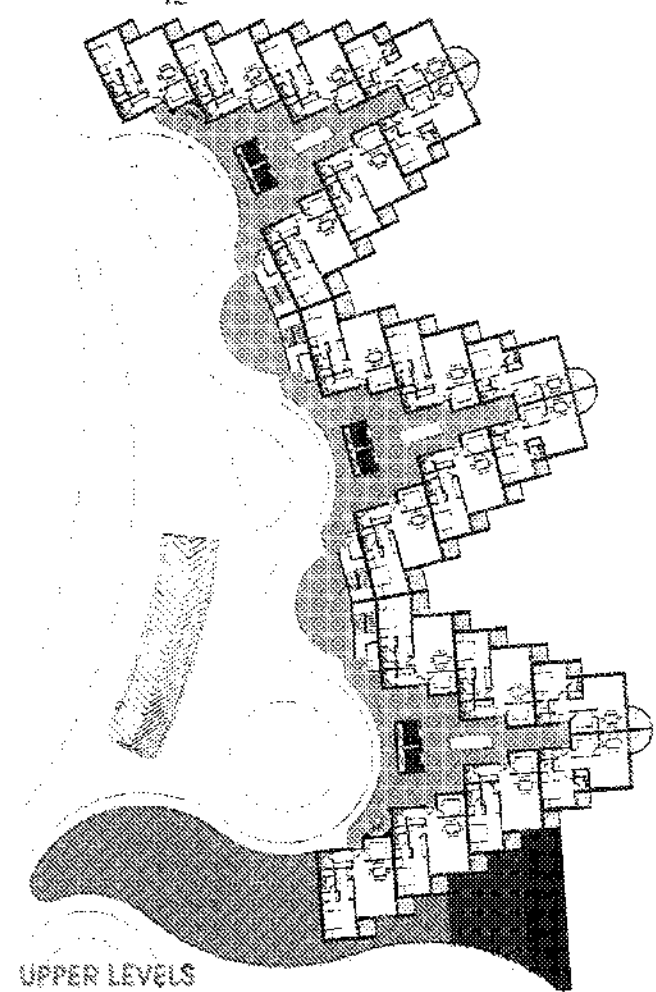
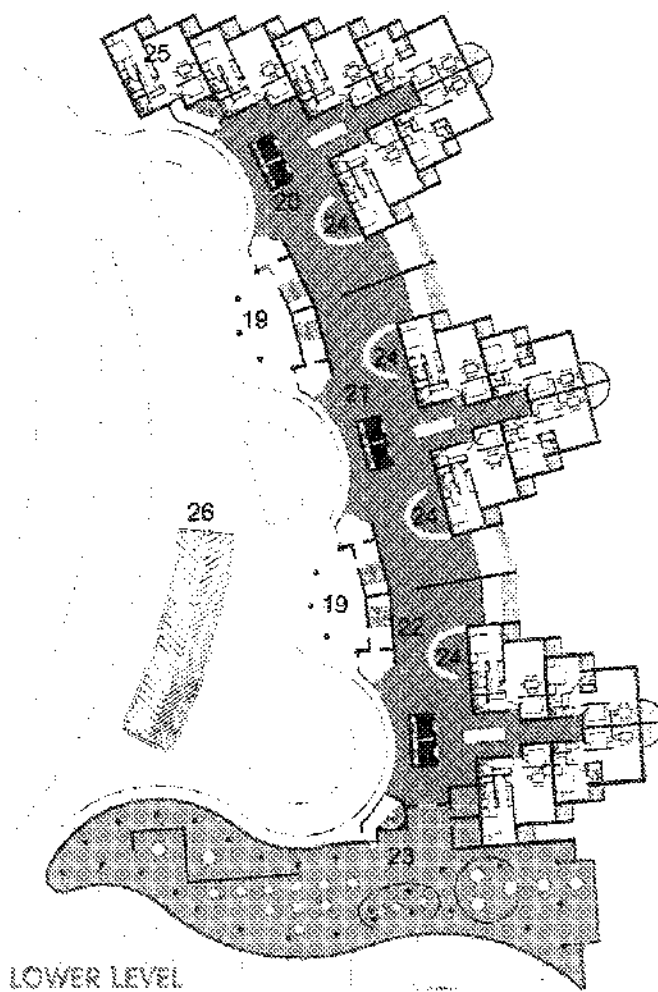
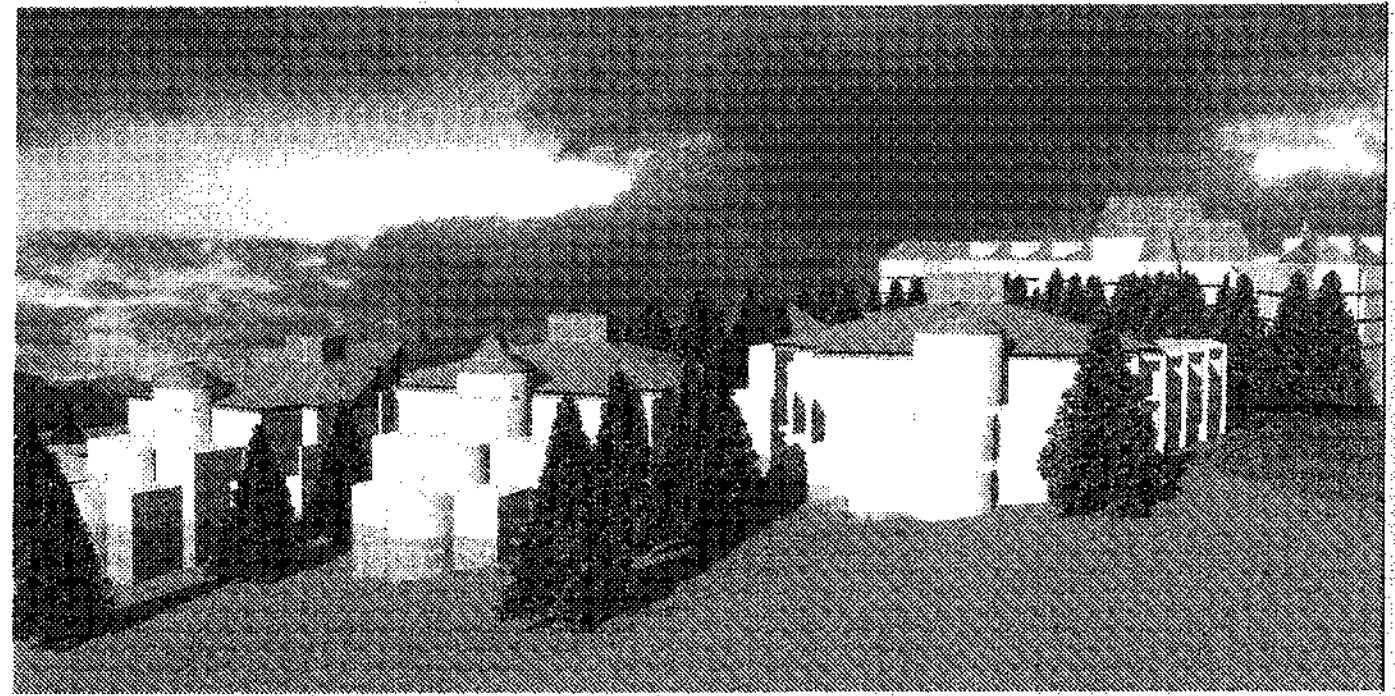
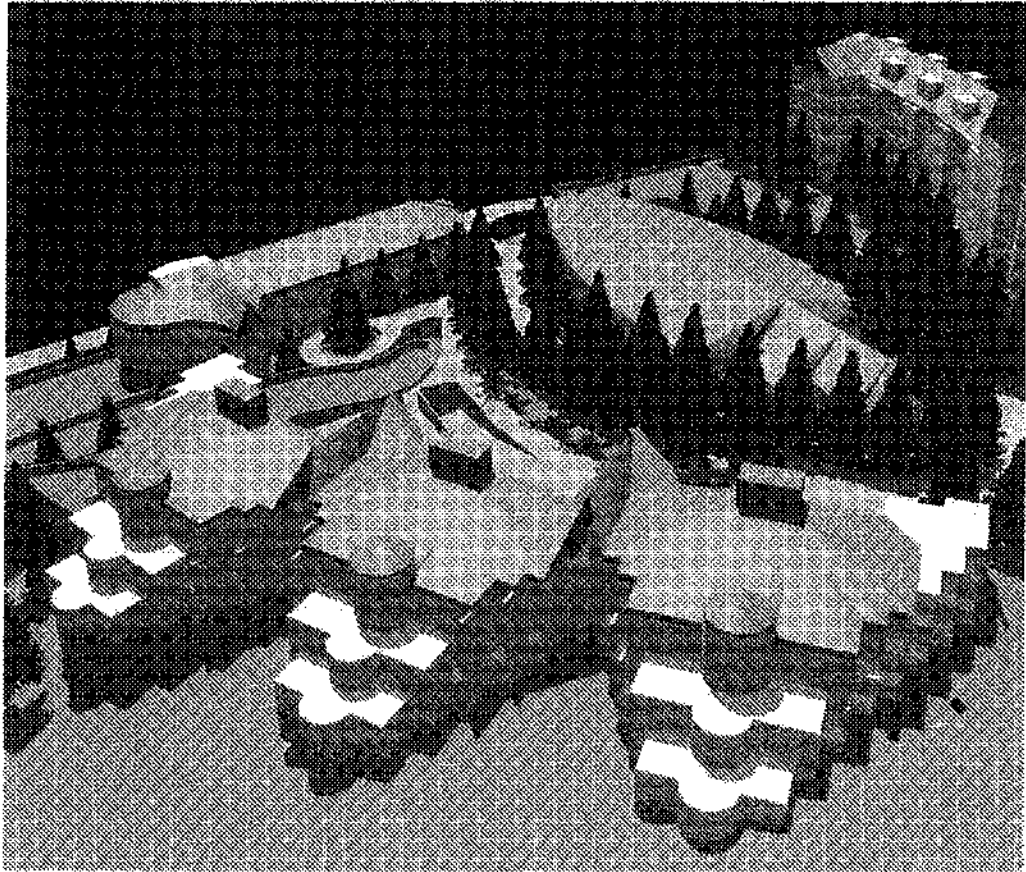
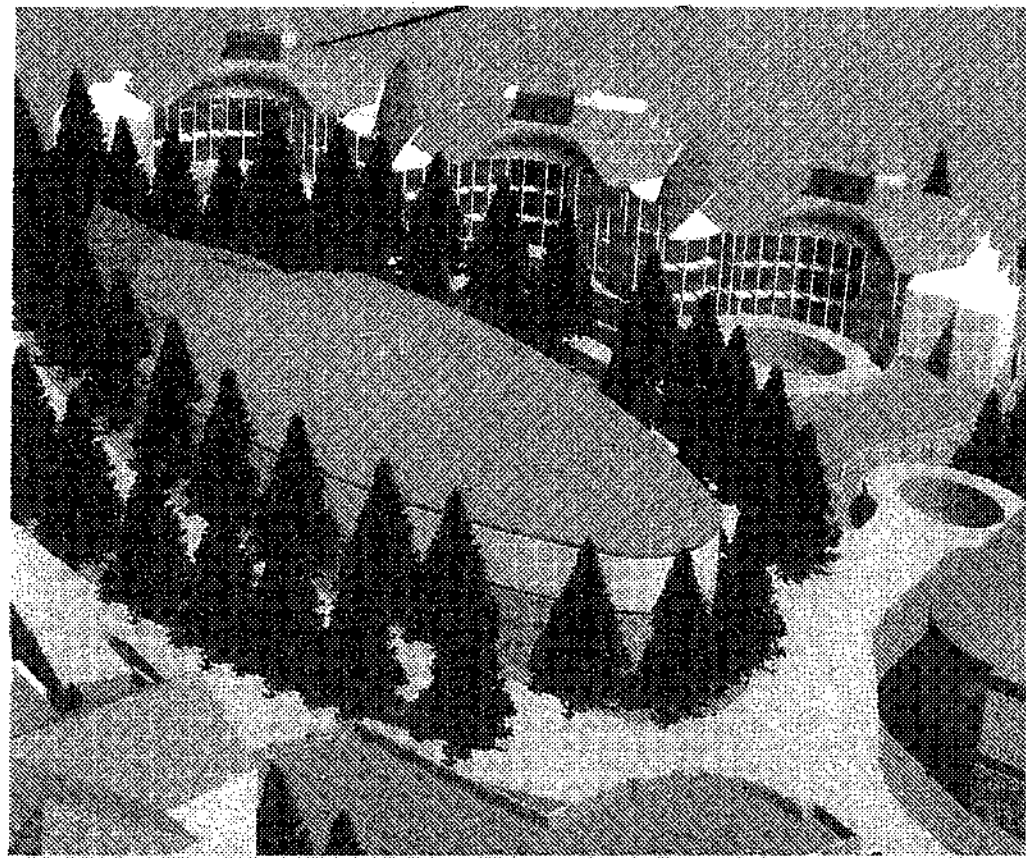
PETROFF PARTNERSHIP ARCHITECTS

PETROFF

THE 101

LUNenburg NOVA SCOTIA

STELLAR INVESTMENT INC



RESIDENTIAL

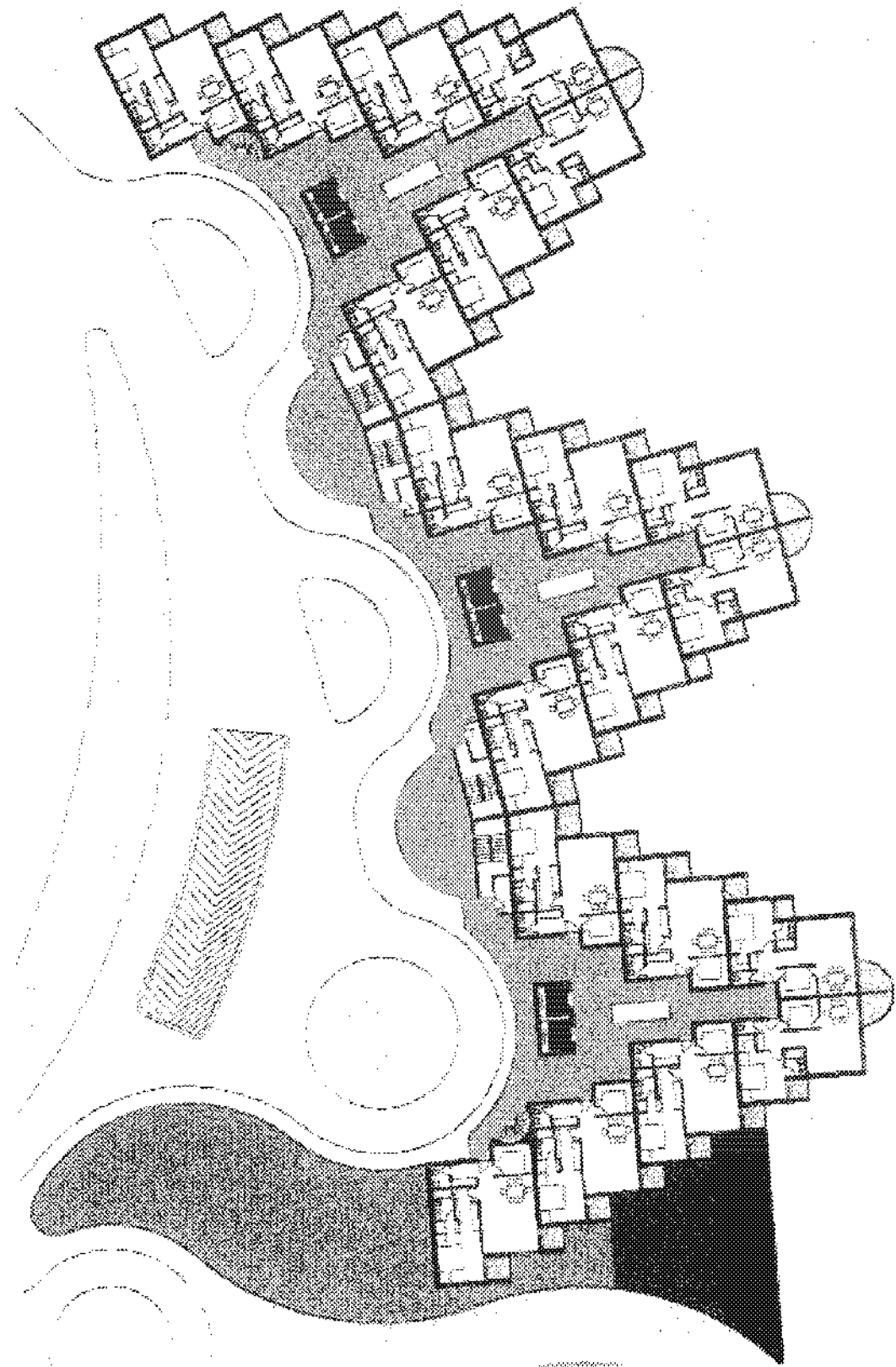
PETROFF PARTNERSHIP ARCHITECTS

PETROFF

STELLAR INVESTMENT INC

LUNenburg NOVA SCOTIA

THE 101



RESIDENTIAL

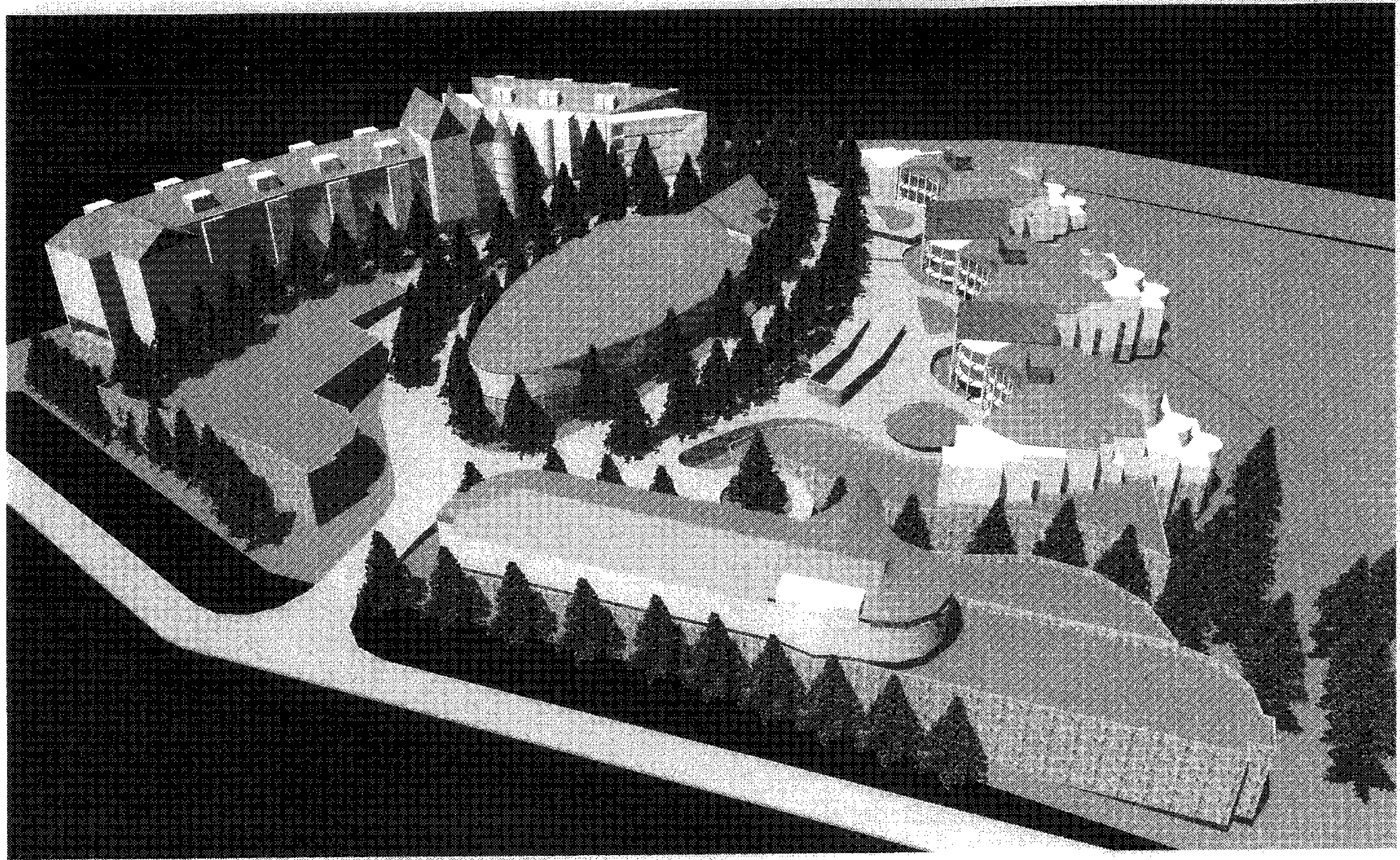
PETROFF PARTNERSHIP ARCHITECTS

PETROFF

THE TOWER

LUNenburg NOVA SCOTIA

STELLAR INVESTMENT INC



AERIAL PERSPECTIVE

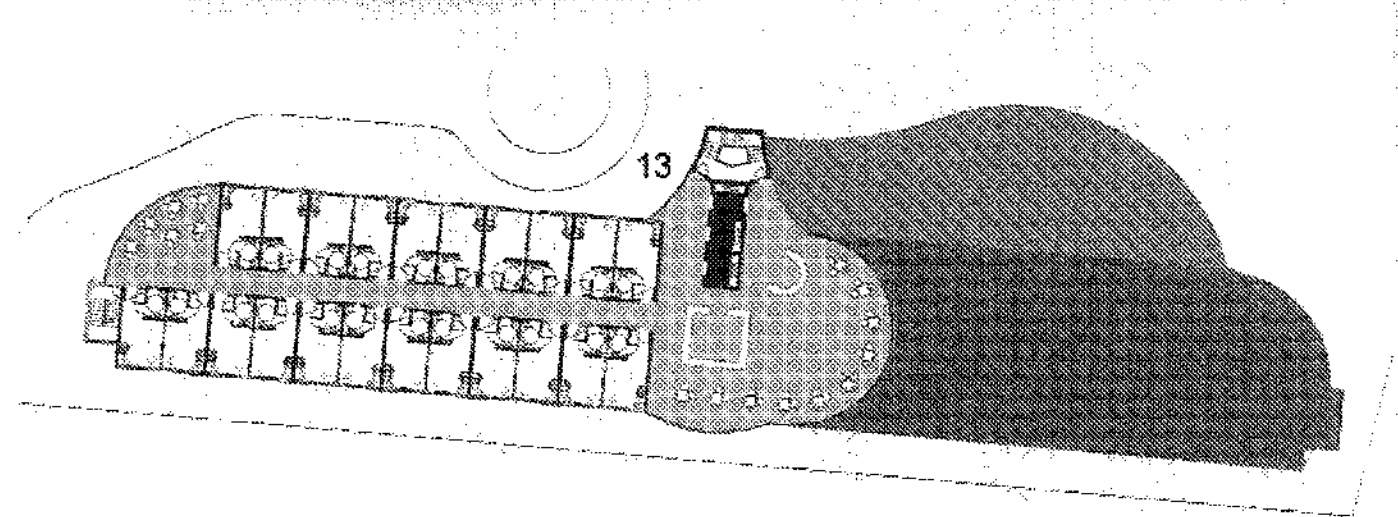
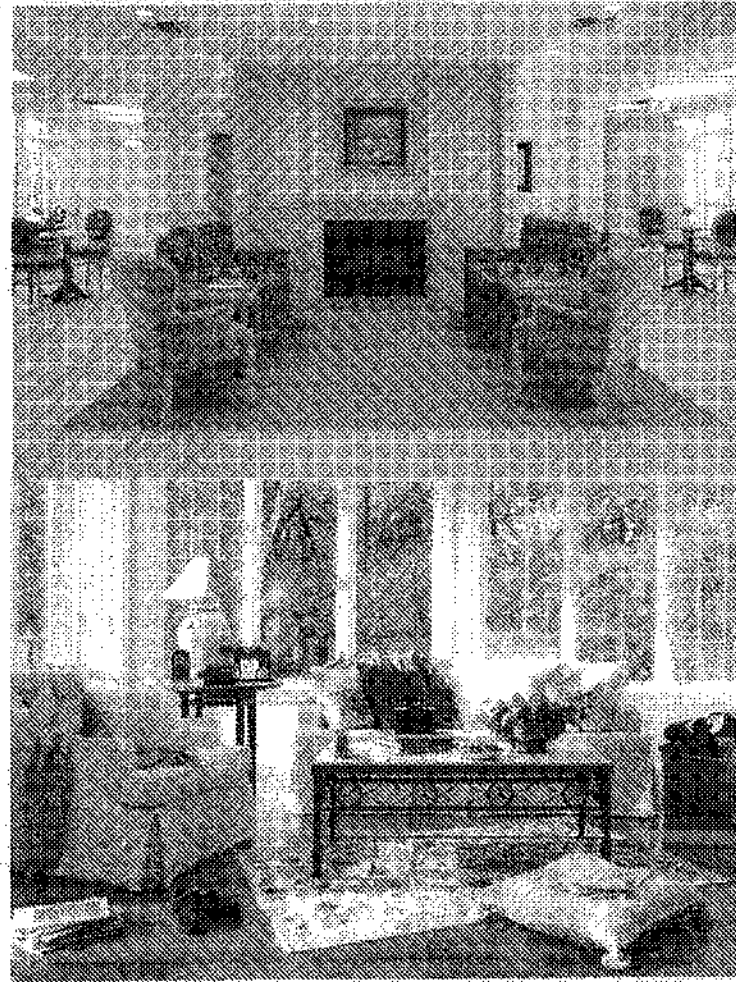
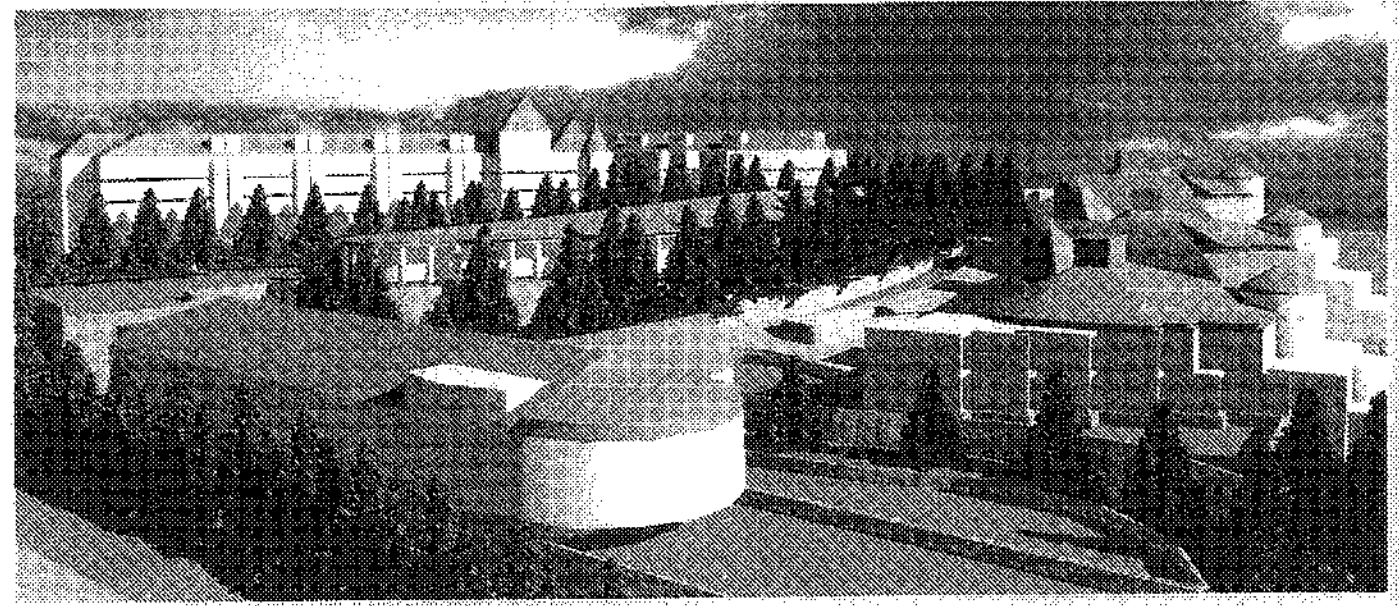
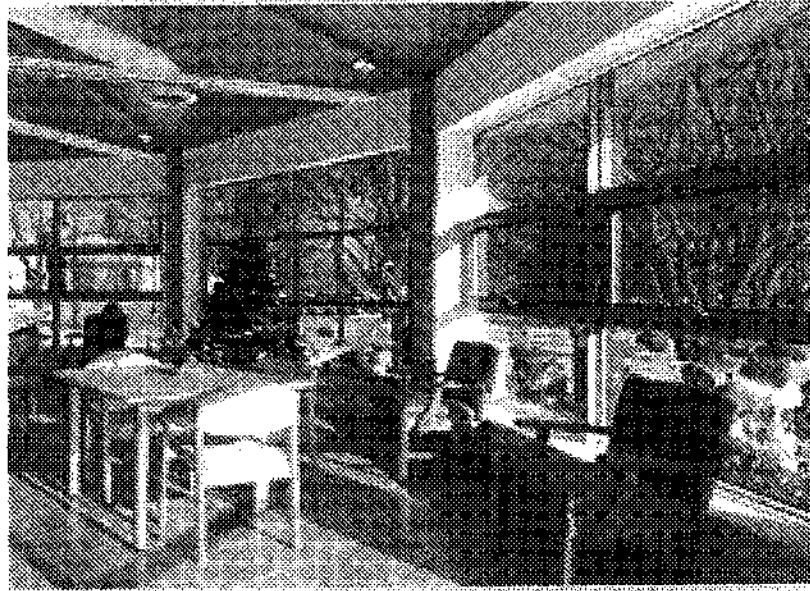
Partnership Architects

**PETROFF**

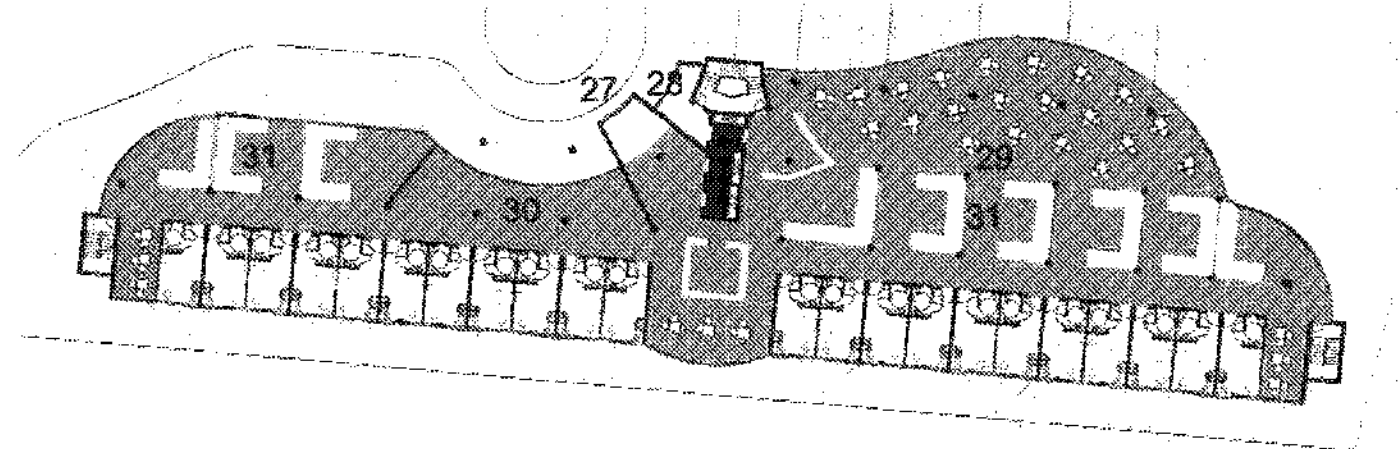
**THE IOP**

LUNenburg NOVA SCOTIA

STELLAR INVESTMENT INC



UPPER LEVELS



LOWER LEVEL

LONG TERM CARE FACILITIES

PETROFF PARTNERSHIP ARCHITECTS

PETROFF

STELLAR INVESTMENT INC

THE 101

LUNenburg NOVA SCOTIA

